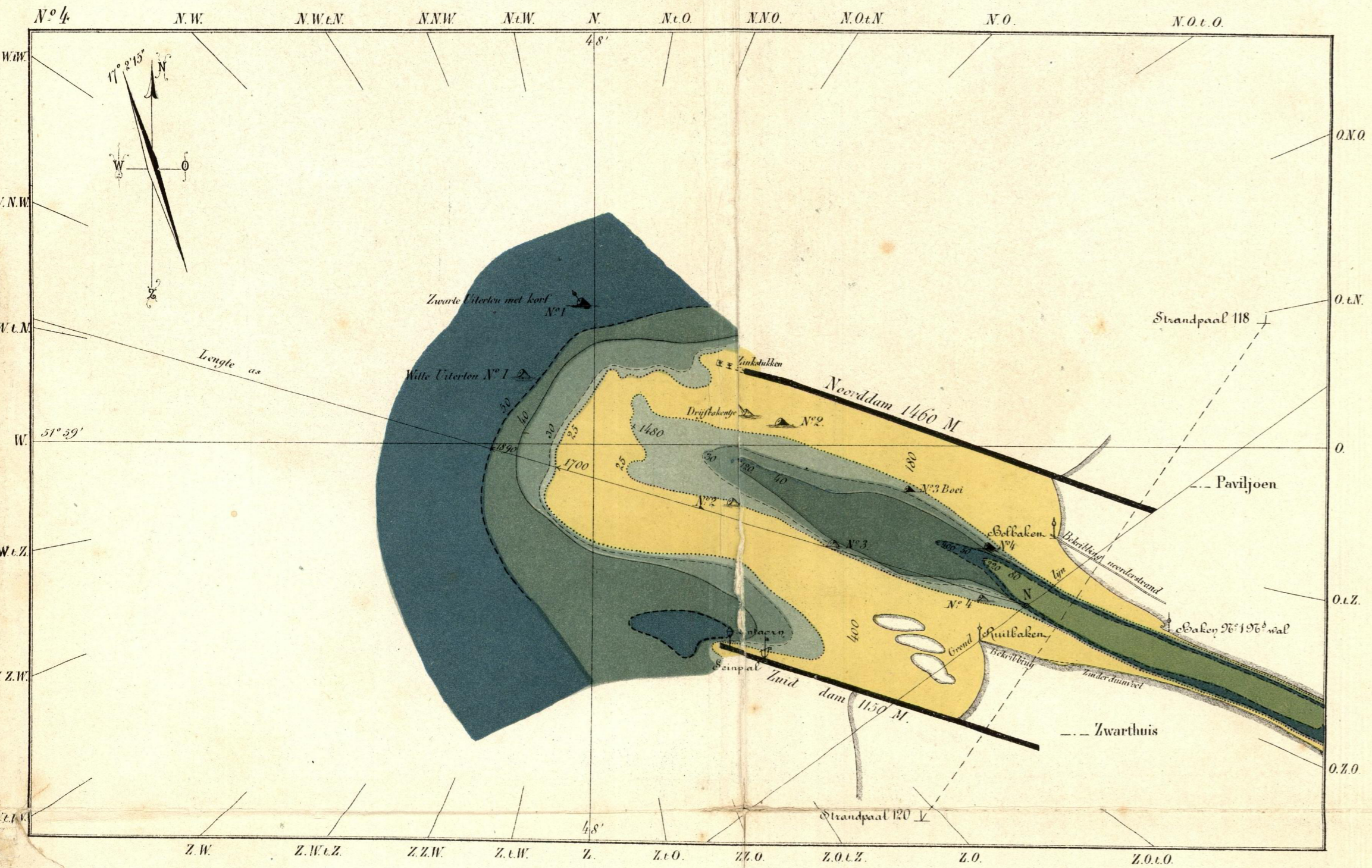
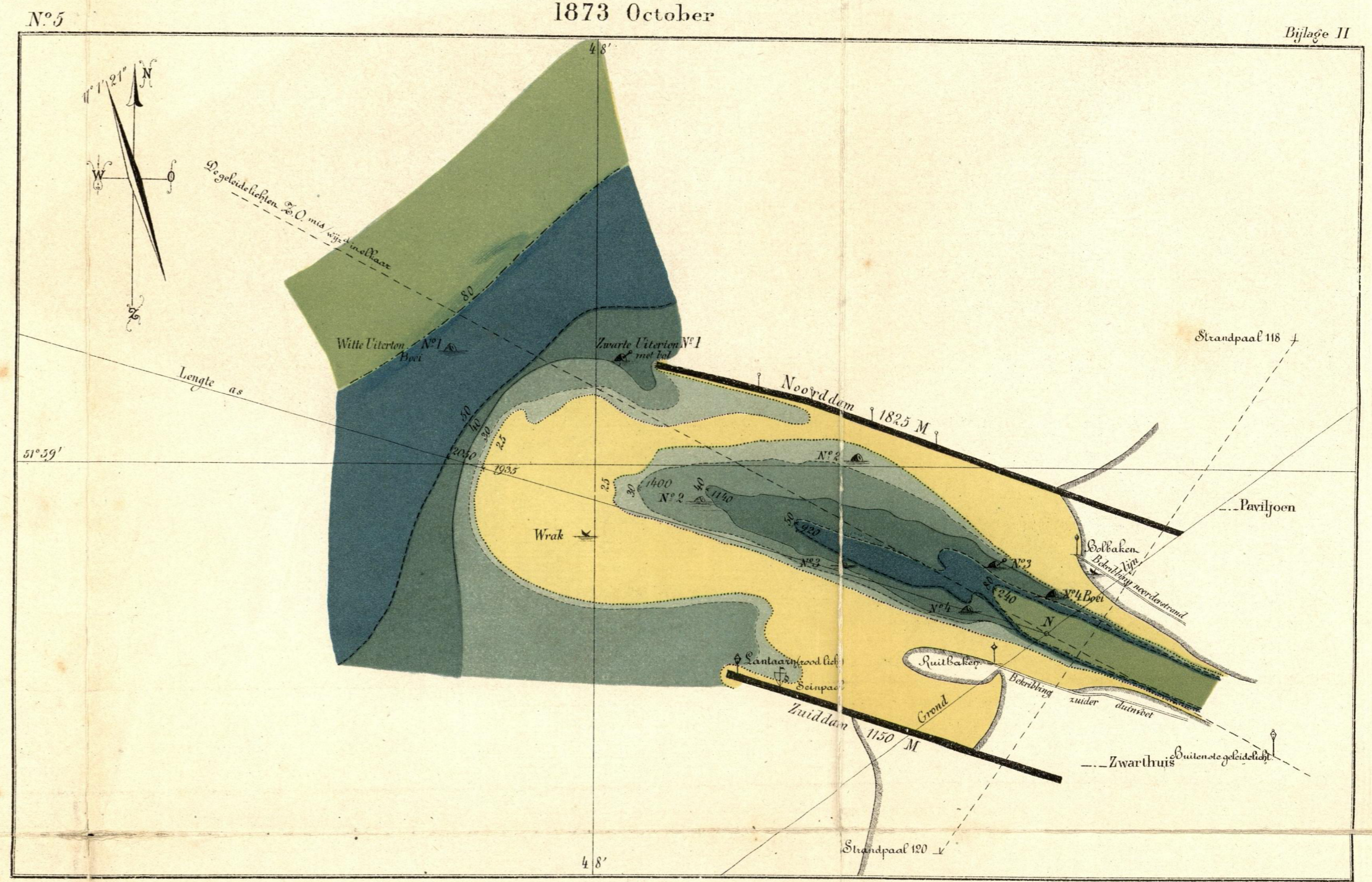


Bijlage I

1872 November.

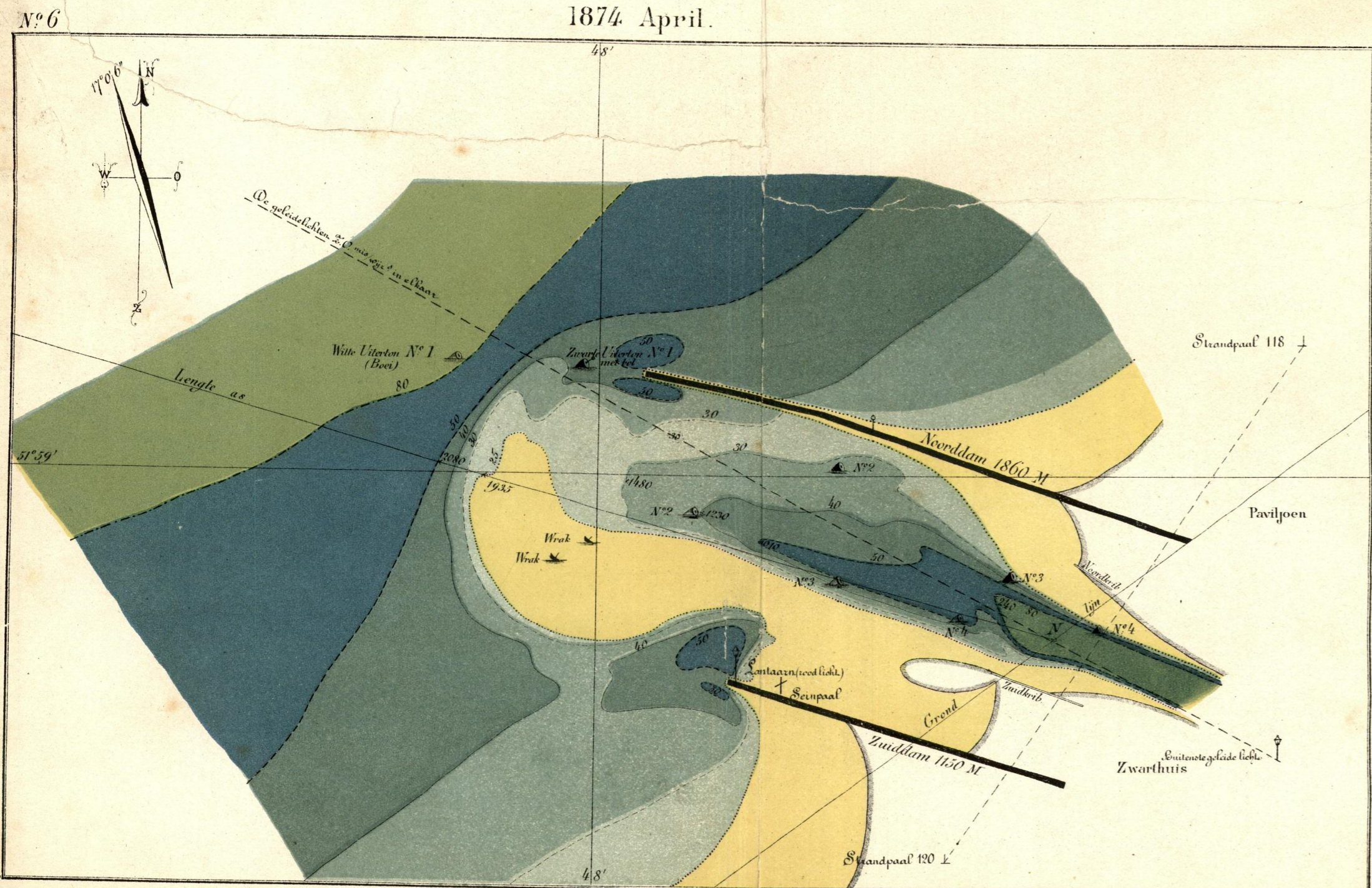


1873 October

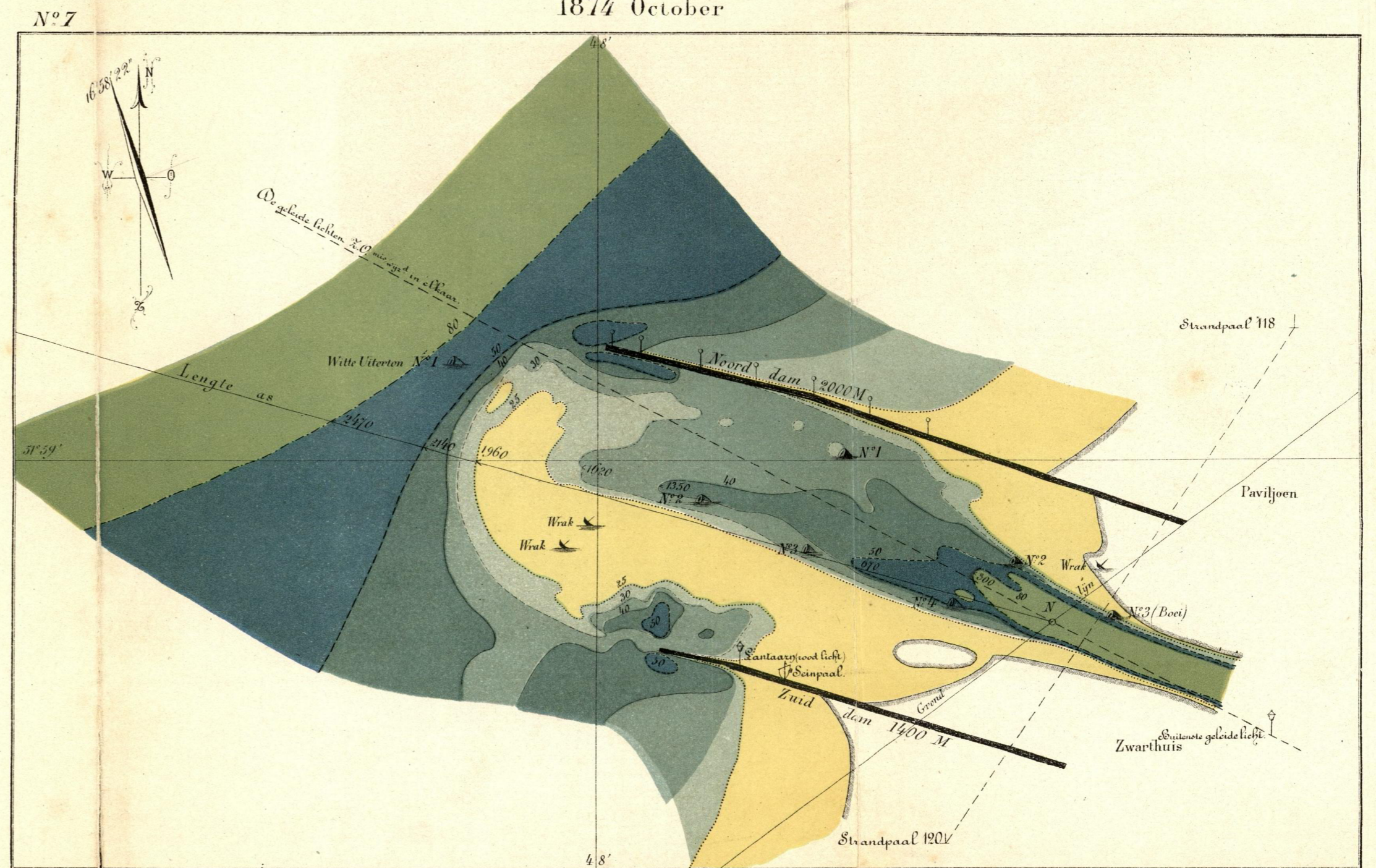


Bijlage II

1874 April.



1874 October



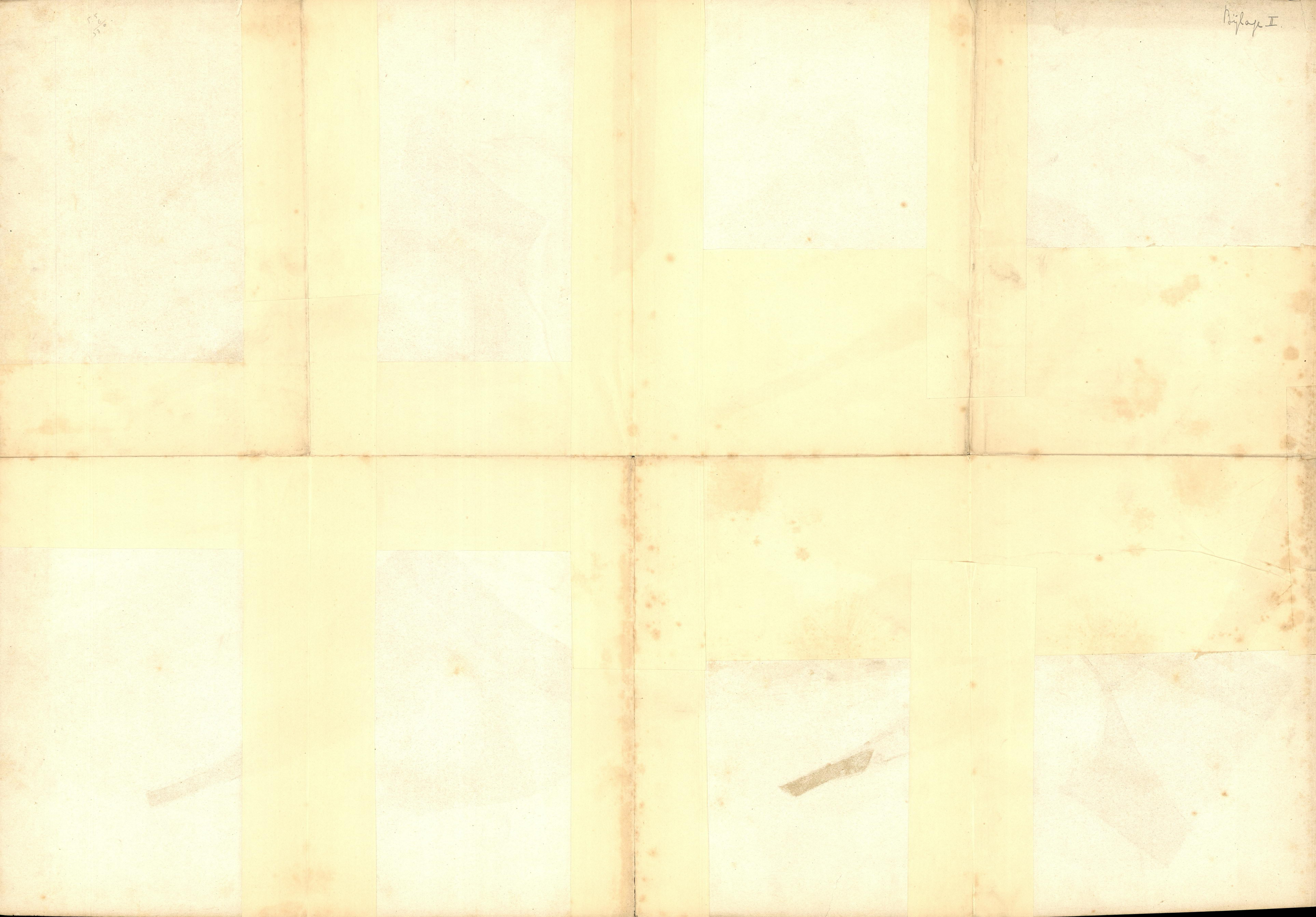
Schaal van 1:15000.



Lith. Enwik & Bingor

55
50

Bylage I



ROTTERDAMSCH E WATERWEG.

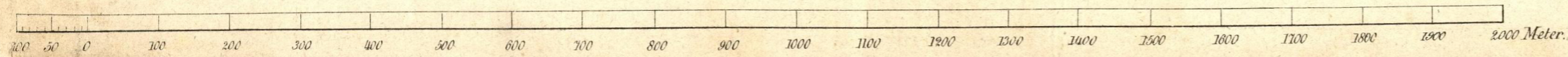
Gemiddelde diepten in d.M. onder laagwater
van November 1877 tot Maart 1880.

Strandpaal 118

	26	25	24	23	22	21	20	19	18	17	16	15	14	13	12	11	10	9	8	7	6	5	4	3	2	1	0		
i.	80.65.62.	70.55.56.	70.50.45.	55.42.36.	41.42.34.	40.42.35.	38.40.34.	44.39.35.	50.40.40.	55.50.33.	62.57.59.	54.53.52.	53.52.50.	55.50.44.	50.43.40.	45.39.33.	39.35.28.	32.30.25.	32.28.22.	30.25.22.	26.21.20.	23.19.20.	22.16.18.	18.13.17.	1.12.14.	9.8.11.			
h.	65.65.75.	45.52.55.	40.39.40.	32.27.34.	30.21.27.	30.26.24.	31.26.24.	34.22.25.	37.34.35.	50.45.40.	56.53.50.	45.51.50.	41.46.50.	41.45.40.	33.35.36.	27.30.32.	27.25.28.	26.26.25.	20.24.26.	26.22.25.	22.19.24.	19.18.23.	20.18.18.	17.20.14.	13.16.13.	13.16.12.			
g.	80.66.59.	60.52.44.	34.42.34.	25.33.48.	24.31.36.	24.32.25.	27.23.25.	35.35.30.	35.36.31.	37.31.36.	43.31.40.	40.35.41.	39.34.40.	35.33.35.	35.30.20.	33.26.22.	30.22.25.	28.17.30.	32.30.30.	28.11.30.	27.19.30.	24.16.34.	22.27.32.	18.17.29.	11.18.26.	10.18.26.			
f.	48.57.60.	32.40.49.	29.32.37.	26.26.32.	27.22.30.	27.21.23.	27.23.25.	29.25.24.	28.27.28.	31.33.34.	47.43.38.	57.44.39.	50.43.37.	35.33.35.	32.40.30.	29.40.27.	32.30.30.	35.30.31.	32.30.30.	33.28.35.	34.25.38.	33.28.40.	32.28.42.	30.32.43.	28.35.40.	23.34.45.	23.34.41.		
e.	80.65.57.	55.50.42.	30.35.29.	21.29.27.	19.29.27.	21.29.26.	22.30.28.	25.32.29.	29.32.29.	31.34.31.	34.35.34.	33.35.36.	35.35.39.	36.35.41.	35.32.37.	30.40.29.	29.40.27.	30.22.25.	28.17.30.	32.30.30.	35.28.35.	34.25.38.	33.28.40.	32.28.42.	30.32.43.	28.35.40.	23.34.45.	23.34.41.	
d.	45.52.58.	34.39.50.	29.30.43.	21.28.34.	26.25.34.	27.22.27.	28.21.32.	30.22.40.	30.32.31.	31.33.31.	33.35.35.	35.35.36.	42.42.37.	47.41.39.	41.41.39.	40.46.40.	36.32.33.	36.31.33.	35.28.35.	39.45.37.	38.47.39.	39.40.40.	40.38.42.	42.40.43.	45.41.43.	40.42.45.	49.48.46.	50.47.47.	
c.	75.61.57.	50.50.42.	34.38.35.	25.31.30.	20.27.29.	21.28.27.	23.29.30.	26.32.31.	29.30.33.	30.33.34.	33.35.35.	35.35.36.	36.37.37.	39.38.39.	40.38.42.	42.40.43.	40.46.40.	36.31.33.	35.28.35.	39.45.37.	38.47.39.	39.40.40.	40.38.42.	42.40.43.	45.41.43.	40.42.45.	49.48.46.	50.47.47.	
b.	65.66.55.	50.55.50.	39.45.42.	35.37.37.	25.25.34.	21.27.26.	24.27.29.	23.26.30.	24.30.30.	26.29.34.	21.28.32.	25.29.35.	24.30.32.	34.36.40.	36.40.42.	42.40.43.	40.46.40.	36.31.33.	35.28.35.	39.45.37.	38.47.39.	39.40.40.	40.38.42.	42.40.43.	45.41.43.	40.42.45.	49.48.46.	50.47.47.	
a.	50.52.60.	39.45.59.	32.42.64.	33.41.63.	29.29.50.	30.27.52.	30.26.34.	32.28.31.	35.29.33.	30.33.34.	33.35.35.	49.42.37.	43.39.38.	47.41.39.	44.42.42.	45.44.45.	46.44.45.	40.42.45.	49.50.49.	52.50.51.	52.51.51.	52.51.52.	55.54.54.	58.54.60.	61.65.65.	63.65.70.	64.70.75.	76.80.75.	
	65.66.62.	55.60.60.	46.55.53.	45.50.50.	45.42.45.	35.31.34.	18.23.25.	19.22.24.	22.23.25.	20.22.22.	17.19.14.	15.18.17.	14.16.15.	12.14.14.	12.12.13.	10.11.8.	1.8.8.	5.7.6.	6.6.3.	2.9.1.	2.4.4.	2.4.4.	2.4.4.	2.4.4.	2.4.4.	2.4.4.	2.4.4.	2.4.4.	
	55.60.68.	50.50.65.	46.50.65.	45.51.67.	44.55.73.	34.52.60.	34.40.35.	33.32.30.	30.32.30.	34.30.30.	22.23.25.	20.22.22.	17.19.14.	15.18.17.	14.16.15.	12.14.14.	12.12.13.	10.11.8.	1.8.8.	5.7.6.	6.6.3.	2.9.1.	2.4.4.	2.4.4.	2.4.4.	2.4.4.	2.4.4.	2.4.4.	
	65.66.67.	60.65.70.	57.65.65.	60.66.67.	64.62.60.	55.50.52.	30.25.26.	18.20.20.	13.18.18.	13.19.18.	13.13.13.	11.15.11.	13.13.10.	10.12.9.	8.10.8.	6.8.8.	5.6.7.	5.7.2.	3.4.2.	3.1.2.	3.4.1.	3.4.1.	3.4.1.	3.4.1.	3.4.1.	3.4.1.	3.4.1.	3.4.1.	
	58.65.70.	61.63.70.	67.65.75.	68.72.79.	78.80.100.	52.80.60.	36.52.30.	27.33.24.	24.25.22.	24.23.22.	16.16.15.	16.16.14.	13.16.13.	13.15.11.	10.10.13.	9.10.11.	8.9.9.	4.5.9.	3.0.0.	3.0.0.	3.0.0.	3.0.0.	3.0.0.	3.0.0.	3.0.0.	3.0.0.	3.0.0.	3.0.0.	
	65.69.69.	62.70.74.	65.70.78.	75.80.91.	75.89.106.	70.80.71.	31.50.24.	28.18.17.	20.17.17.	13.13.15.	13.13.13.	11.15.11.	13.13.10.	10.12.9.	8.10.8.	6.8.8.	5.6.7.	5.7.2.	3.4.2.	3.1.2.	3.4.1.	3.4.1.	3.4.1.	3.4.1.	3.4.1.	3.4.1.	3.4.1.	3.4.1.	
	66.64.70.	70.68.75.	80.75.80.	92.90.110.	101.110.125.	75.115.73.	30.50.38.	19.22.23.	14.18.20.	14.16.19.	13.15.14.	13.15.14.	13.13.10.	10.12.9.	8.10.8.	6.8.8.	5.6.7.	5.7.2.	3.4.2.	3.1.2.	3.4.1.	3.4.1.	3.4.1.	3.4.1.	3.4.1.	3.4.1.	3.4.1.	3.4.1.	

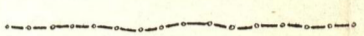
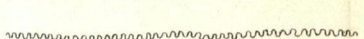
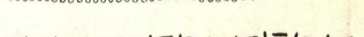
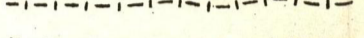
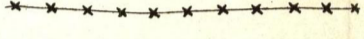
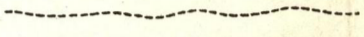
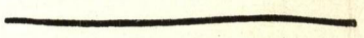
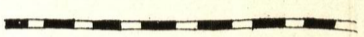
- (1) Gemiddelde diepte in November 1877.
 (2) " " April 1878.
 (3) " " October 1878.
 (4) " " Juni 1879.
 (5) " " October 1879.
 (6) " " Maart 1880.

Schaal 1 à 7500.

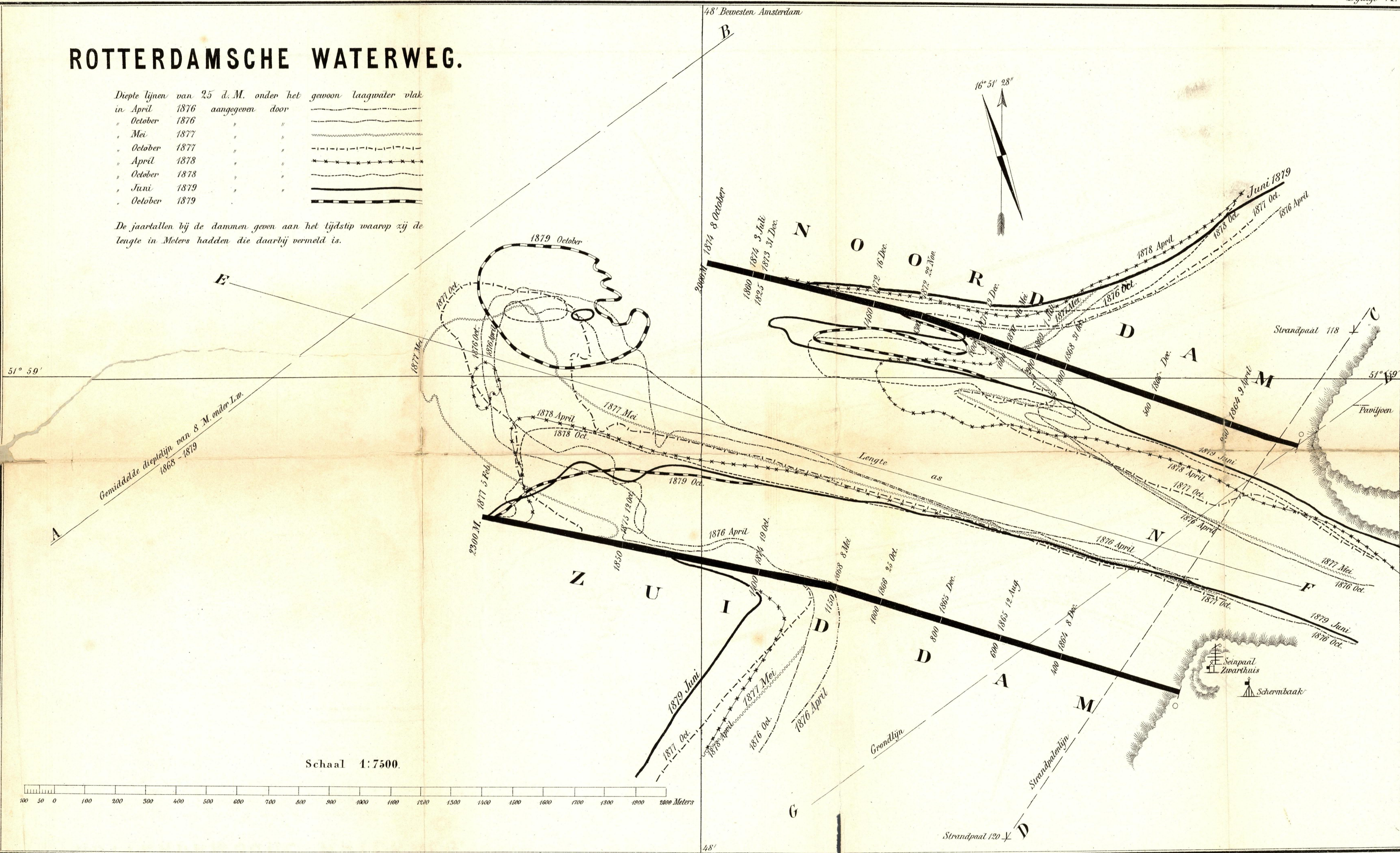


ROTTERDAMSCH E WATERWEG.

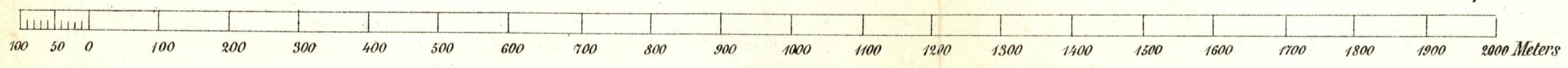
Diepte lijnen van 25 d. M. onder het gewoon laagwater vlak

in April	1876	aangegeven door	
"	October	1876	
"	Mei	1877	
"	October	1877	
"	April	1878	
"	October	1878	
"	Juni	1879	
"	October	1879	

De jaartallen bij de dammen geven aan het tijdstip waarop zij de lengte in Meters hadden die daarbij vermeld is.



Schaal 1:7500.



ROTTERDAMSCHER WATERWEG.

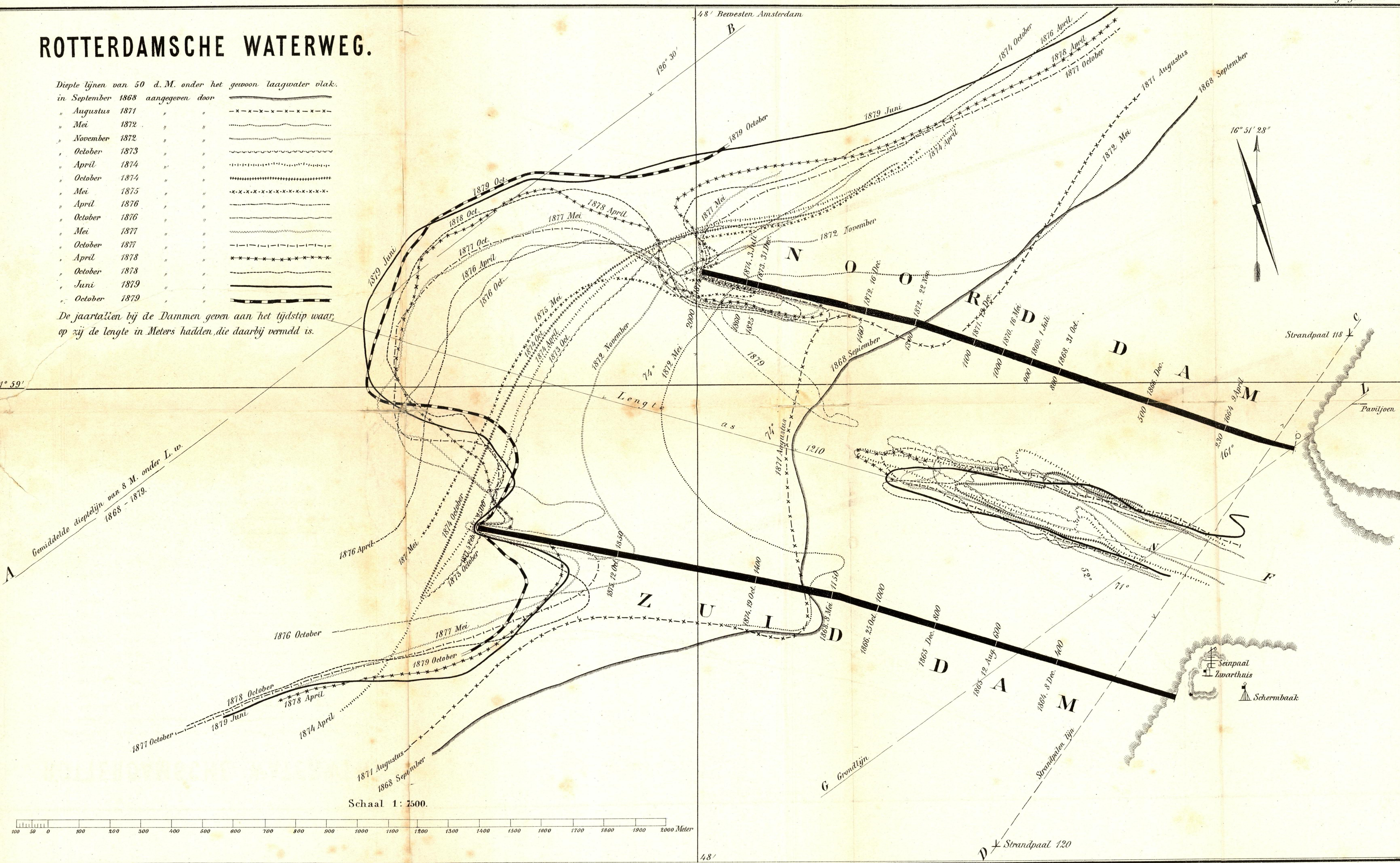
Diepte lijnen van 50 d. M. onder het gewoon laagwater vlak.
in September 1868 aangegeven door

Augustus 1871	-----
Mei 1872	-x-x-x-x-x-x-x-x-
November 1872
October 1873
April 1874
October 1874
Mei 1875	-x-x-x-x-x-x-x-x-
April 1876
October 1876
Mei 1877
October 1877
April 1878
October 1878
Juni 1879
October 1879

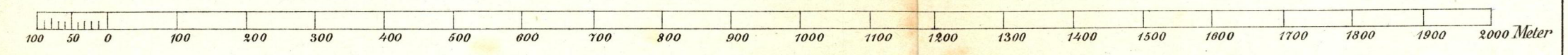
De jaartallen bij de Dammen geven aan het tijdstip waar, op zij de lengte in Meters hadden, die daarbij vermeld is.

51° 59'

A Gemiddelde dieptelijn van 8 M. onder L. w.
1868 - 1879.



Schaal 1: 2500.

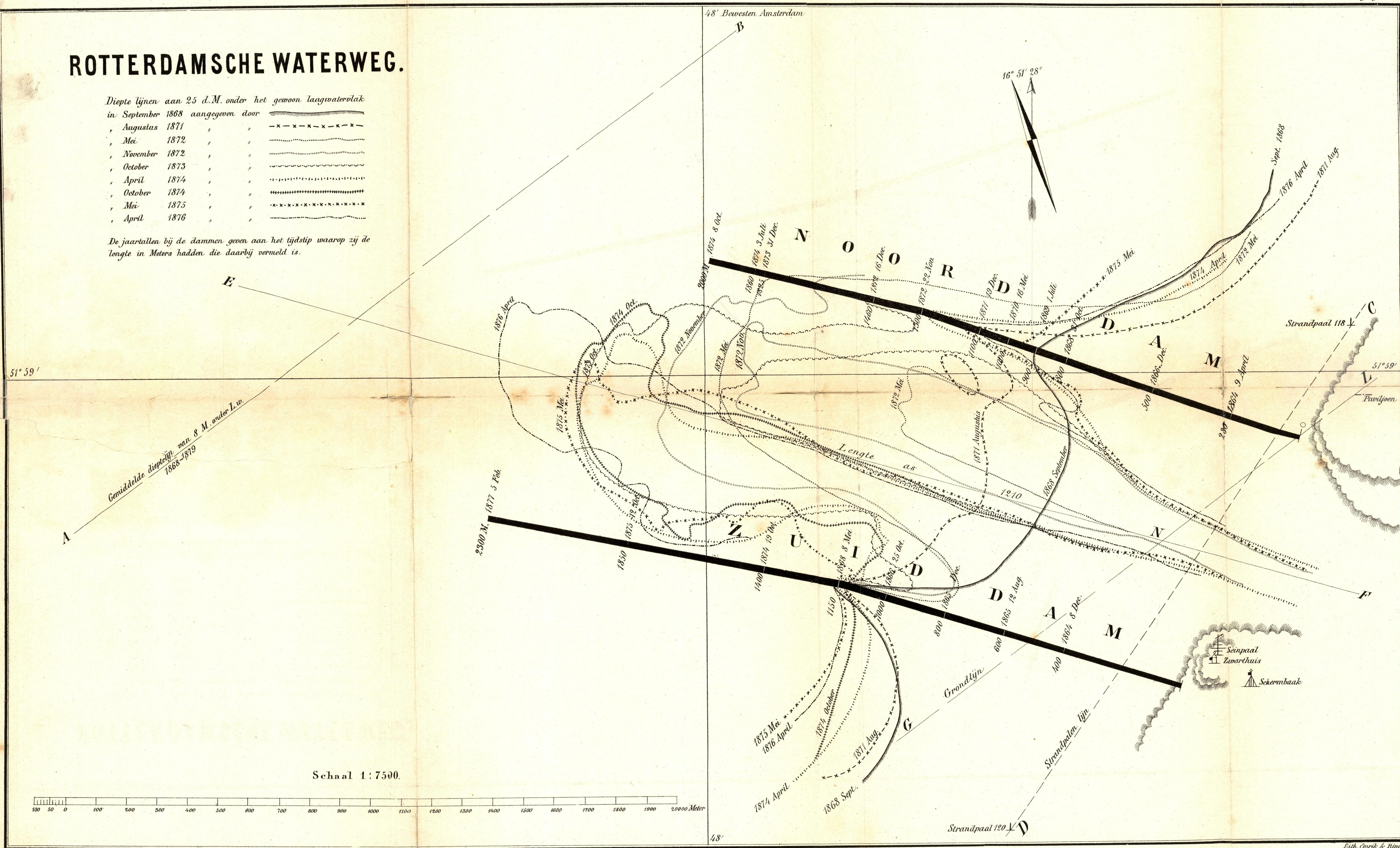


ROTTERDAMSCHER WATERWEG.

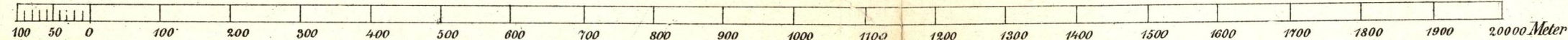
Diepte lijnen aan 2.5 d.M. onder het gewoon laagwatervlak in September 1868 aangegeven door

Augustus 1871	-x-x-x-x-x-x-x-
Mei 1872
November 1872
October 1873
April 1874
October 1874
Mei 1875	-x-x-x-x-x-x-x-x-x-
April 1876

De jaartallen bij de dammen geven aan het tijdstip waarop zij de lengte in Meters hadden die daarbij vermeld is.



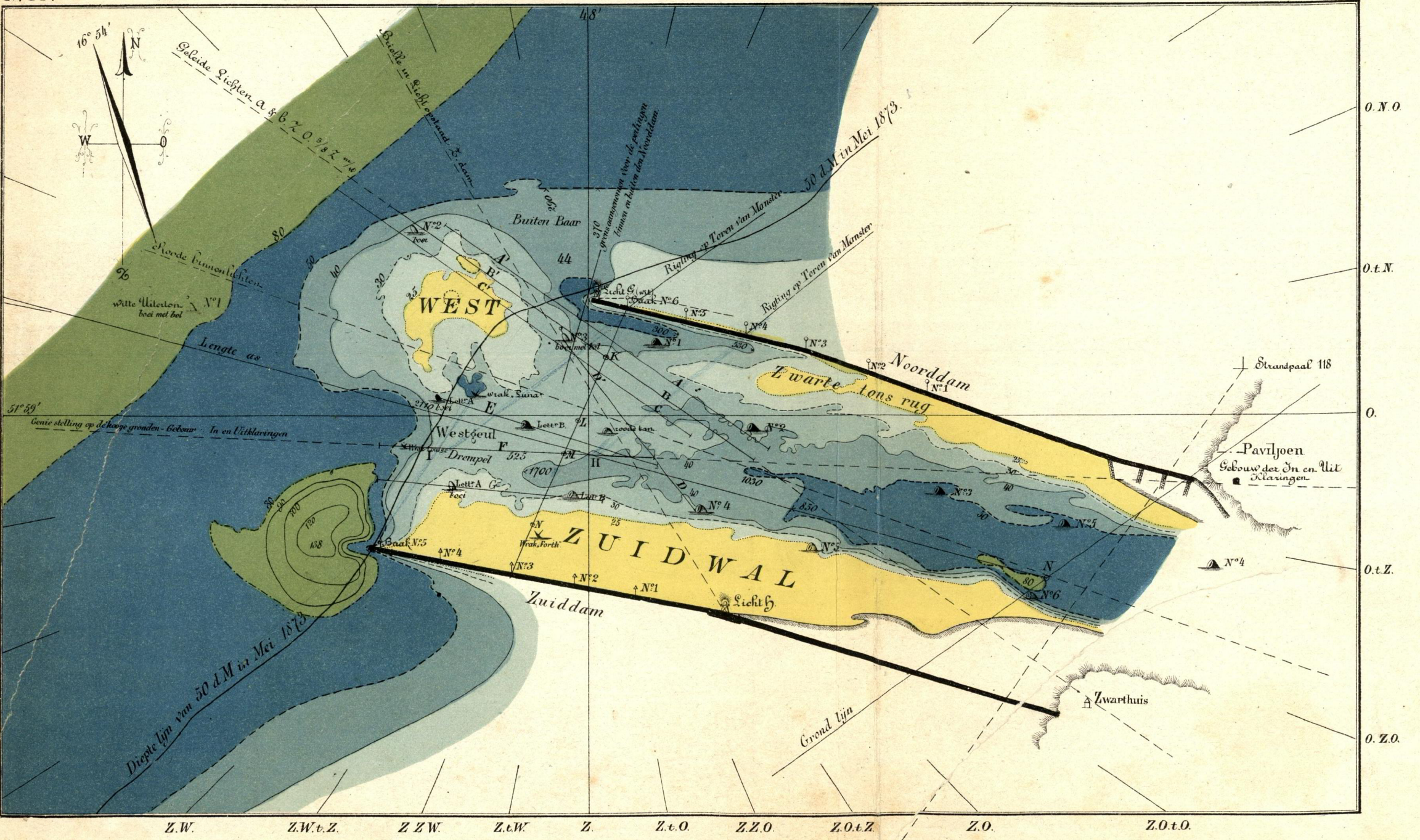
Schaal 1:7500.



1880 Maart.

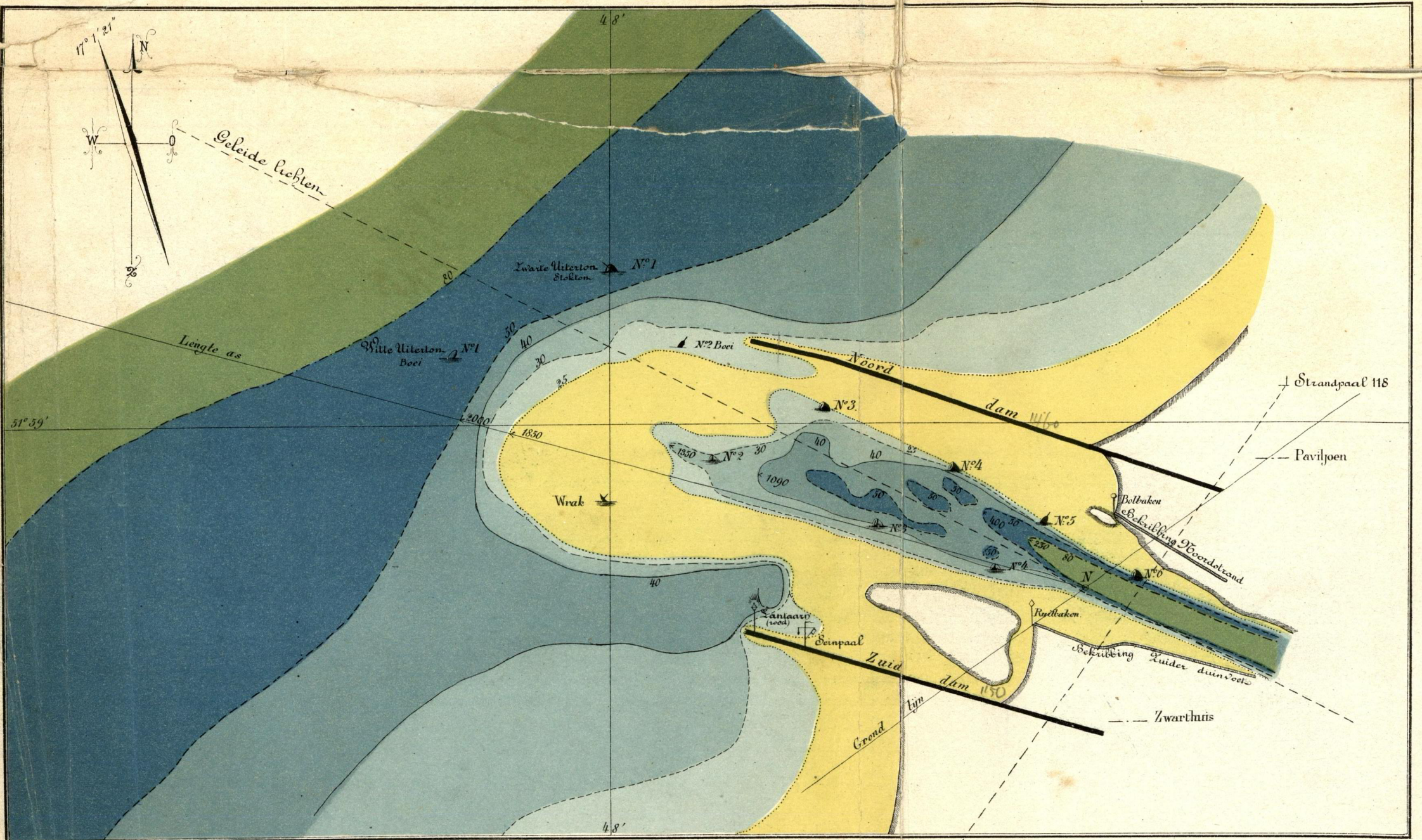
Bijlage IV^a

N^o 18.

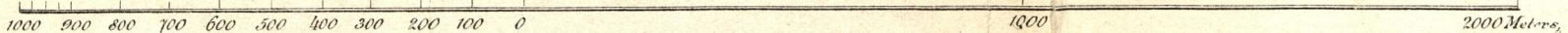


1873 Mei.

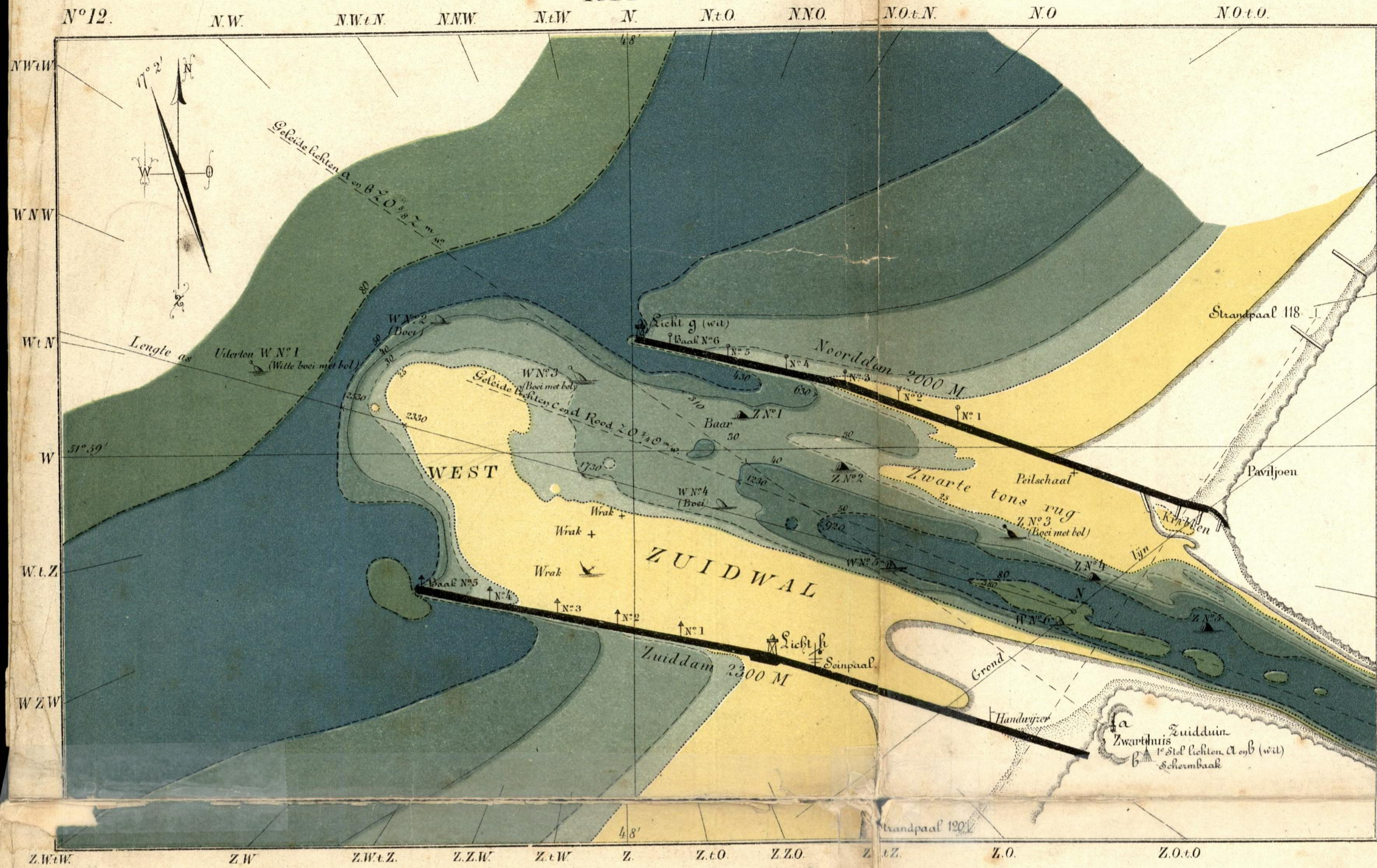
N^o 19.



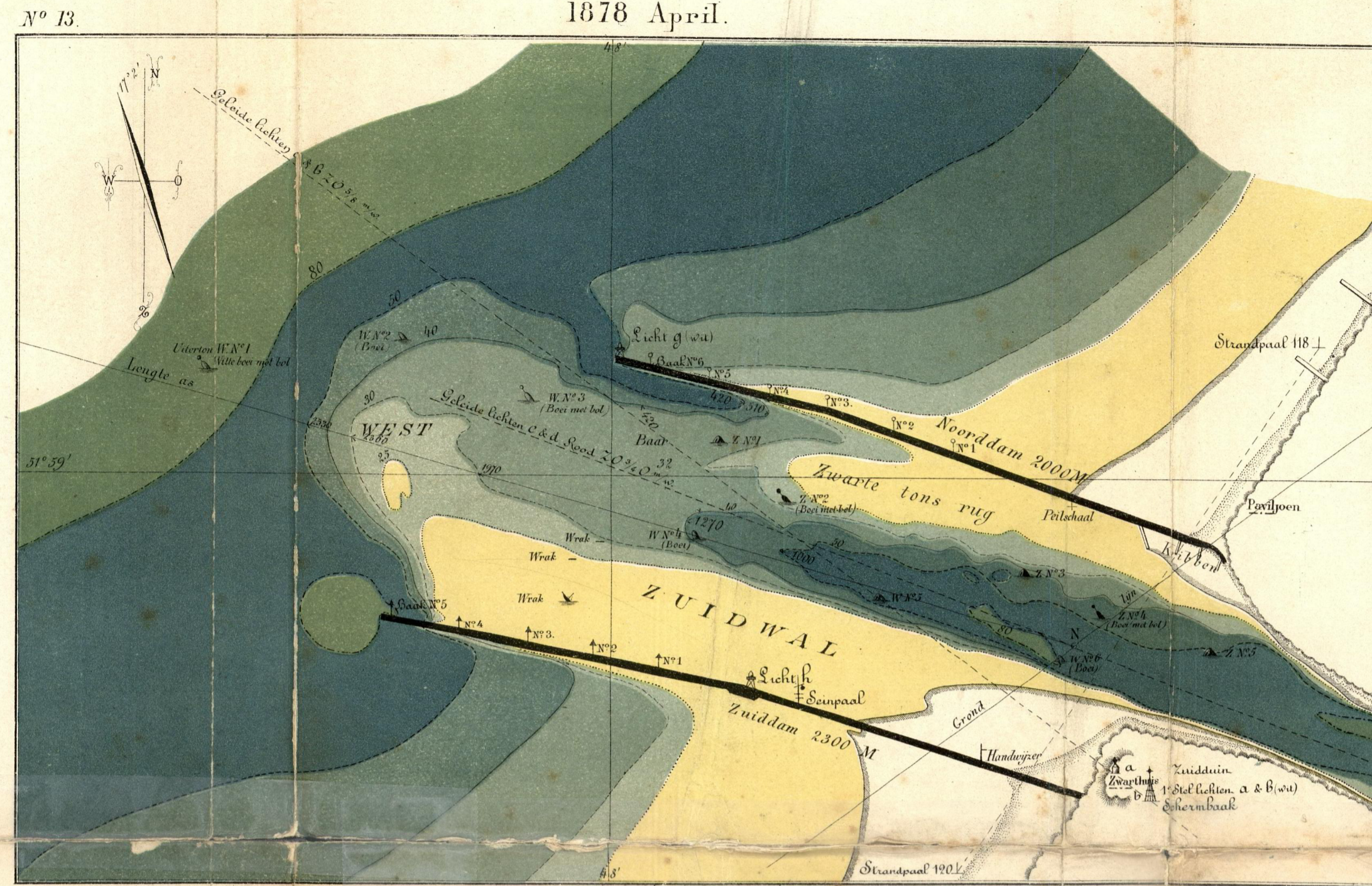
Schaal van 1.15000.



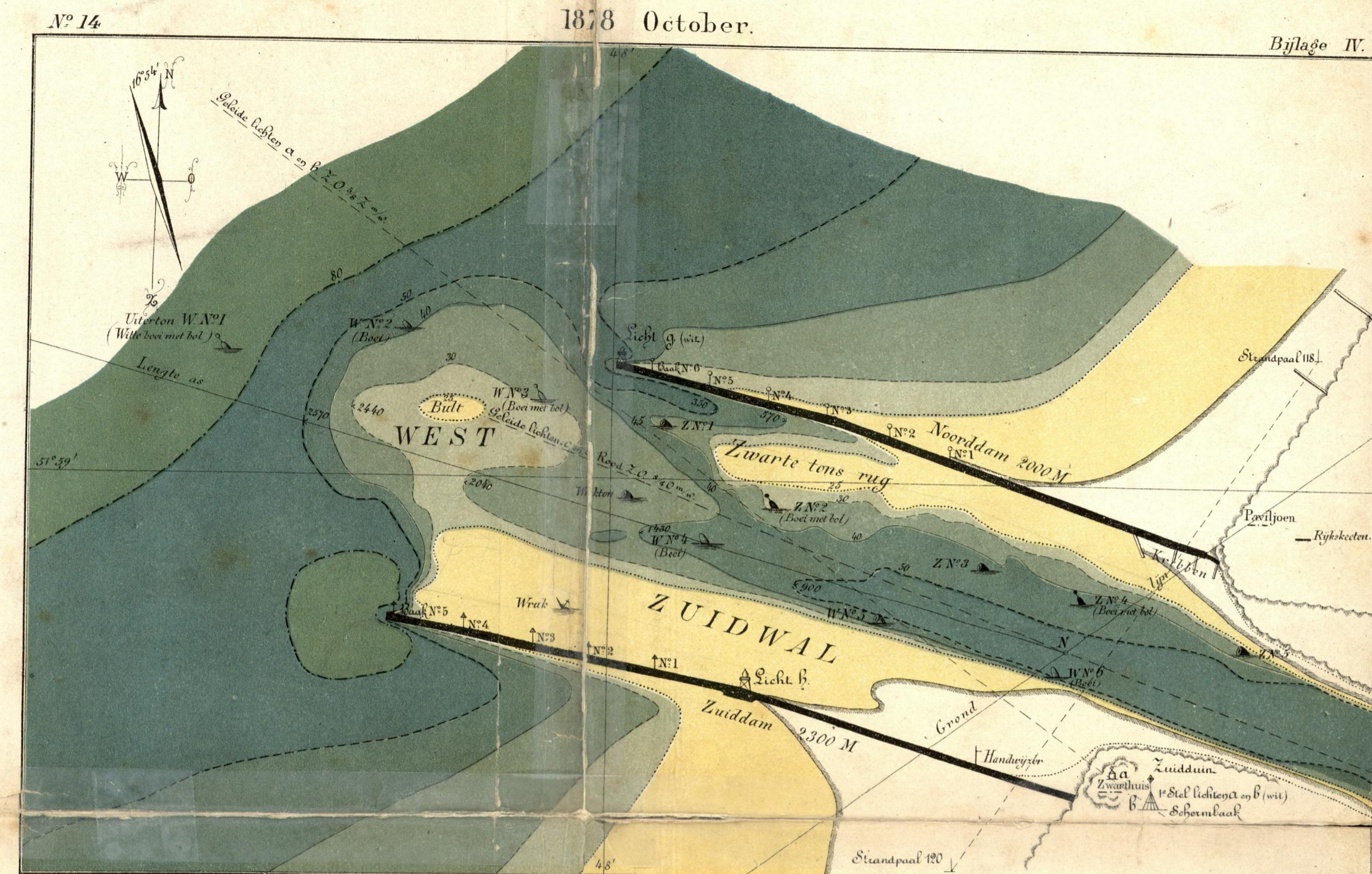
1877 October.



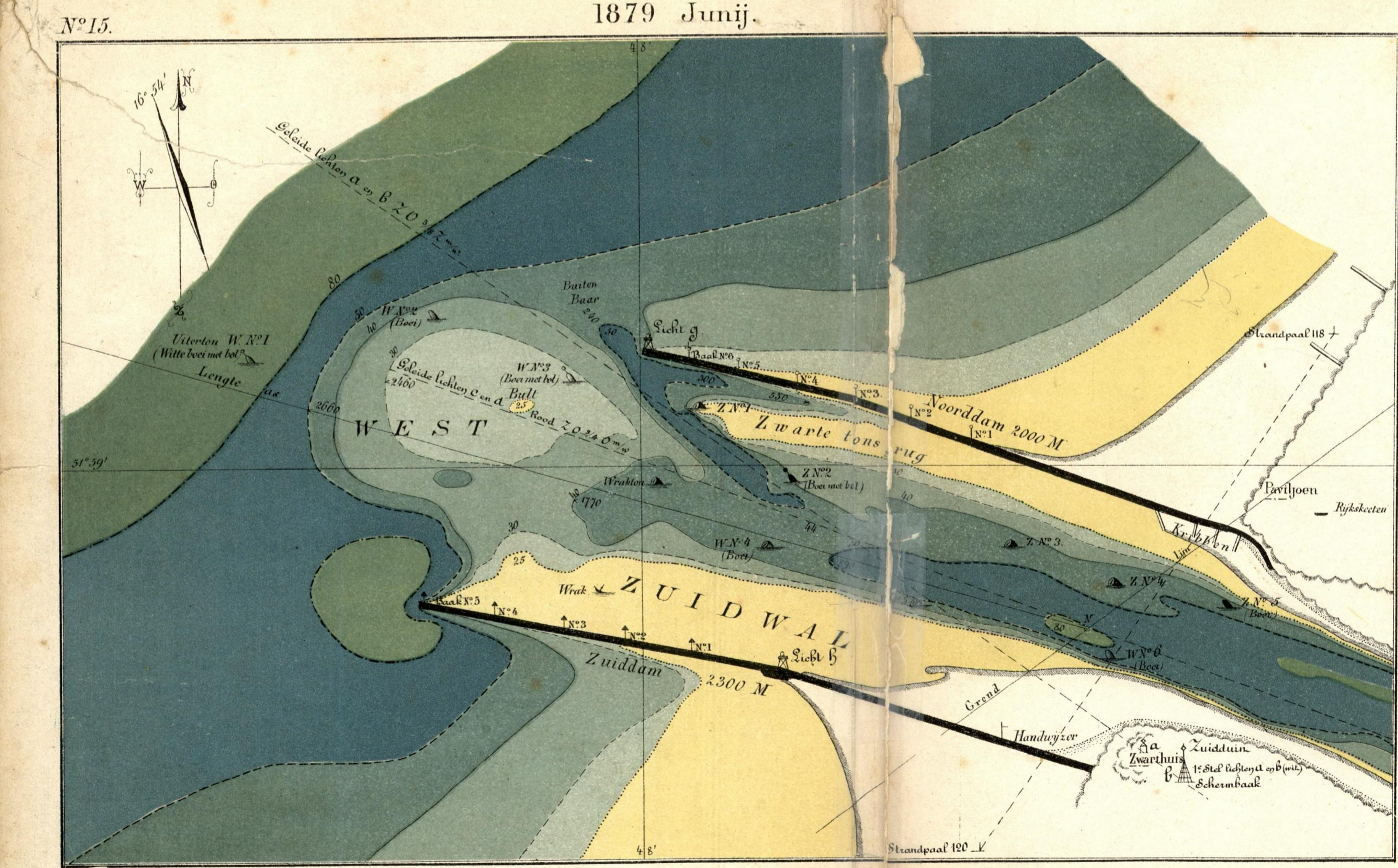
1878 April.



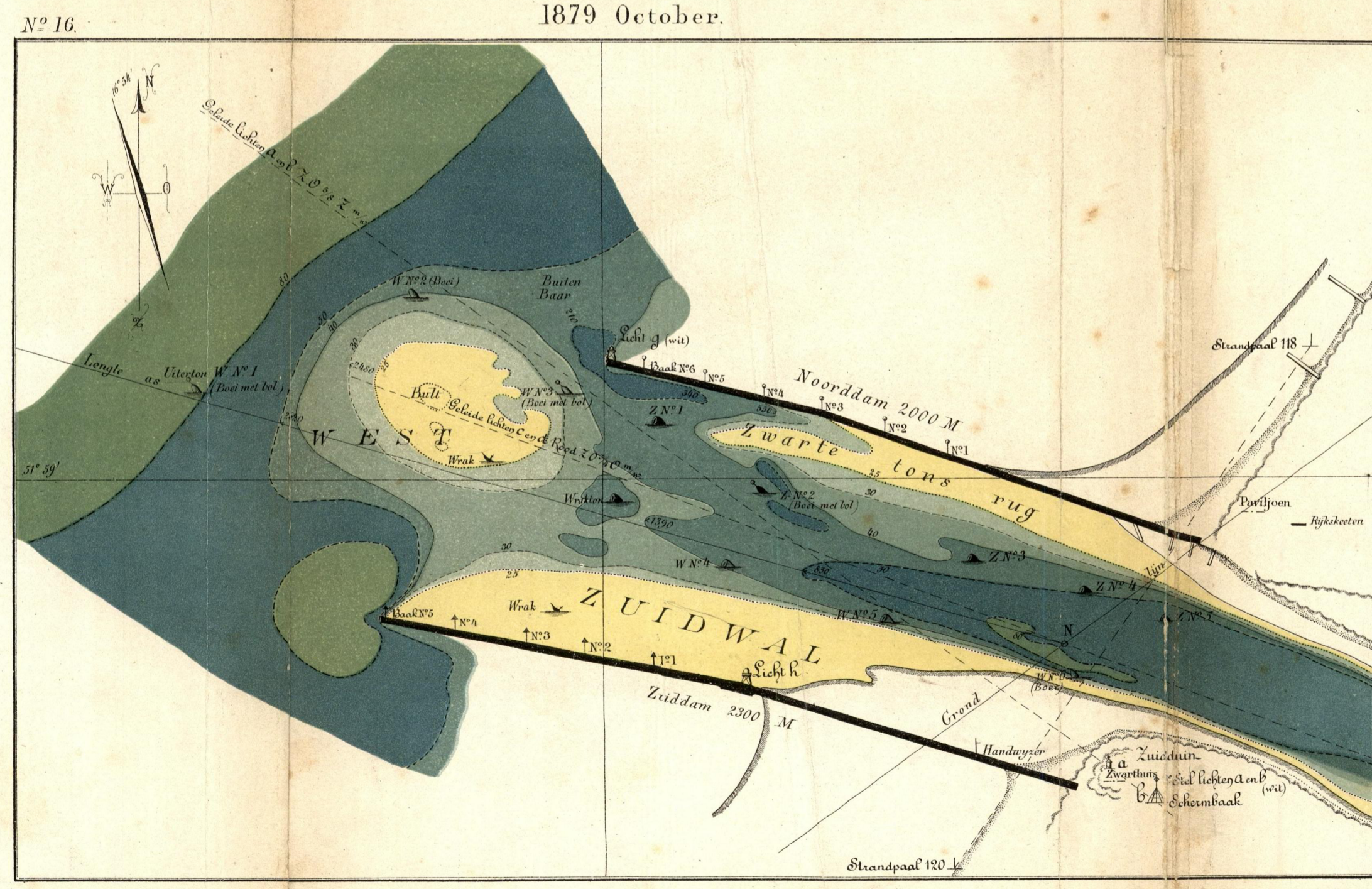
1878 October.



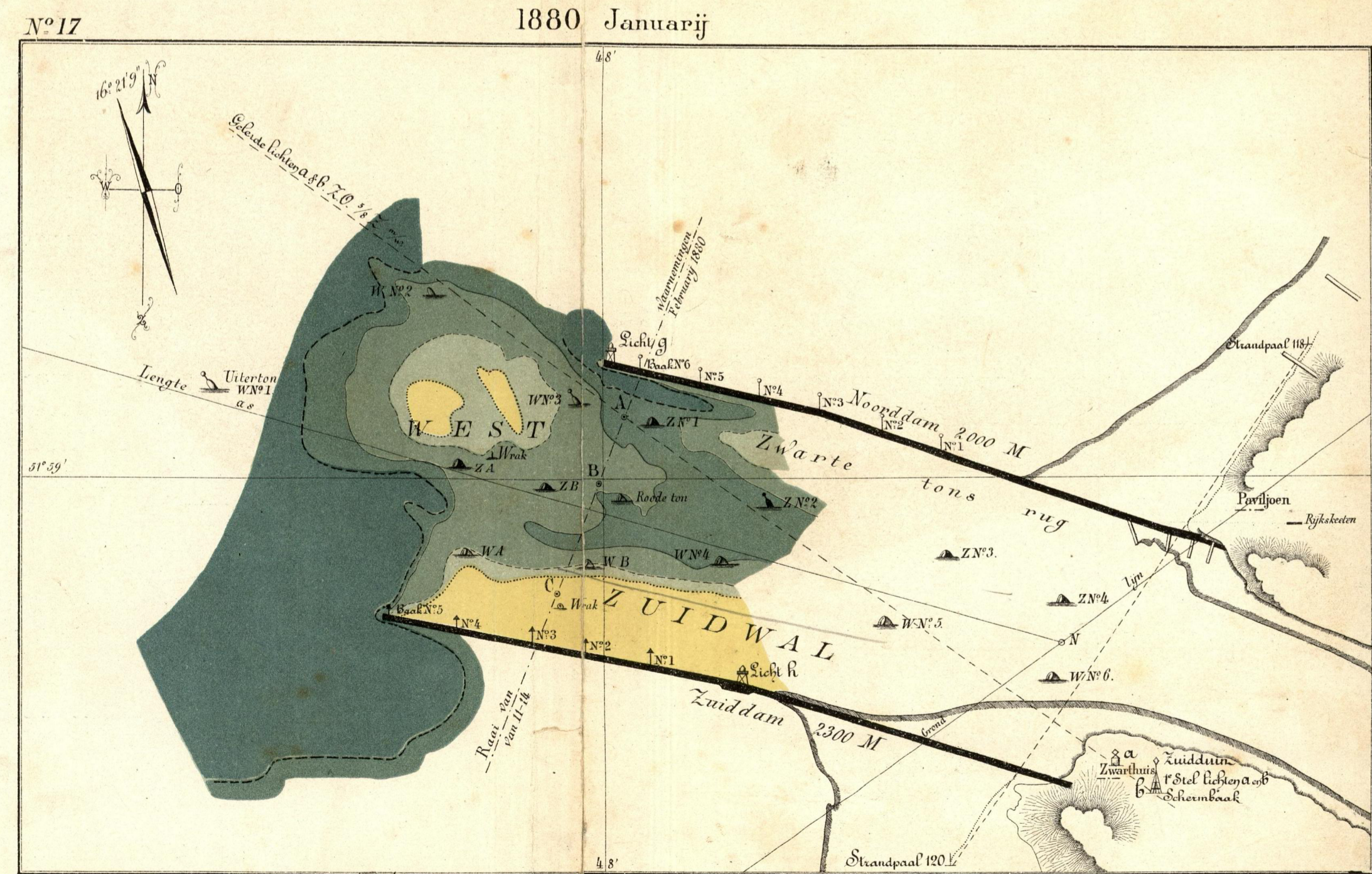
1879 Junij.



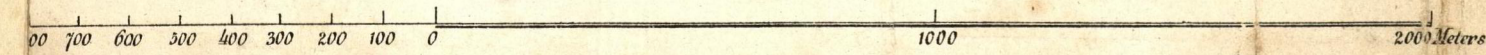
1879 October.



1880 Januarij.



Schaal van 1:15000.



Lith. Emrik & Dingor