

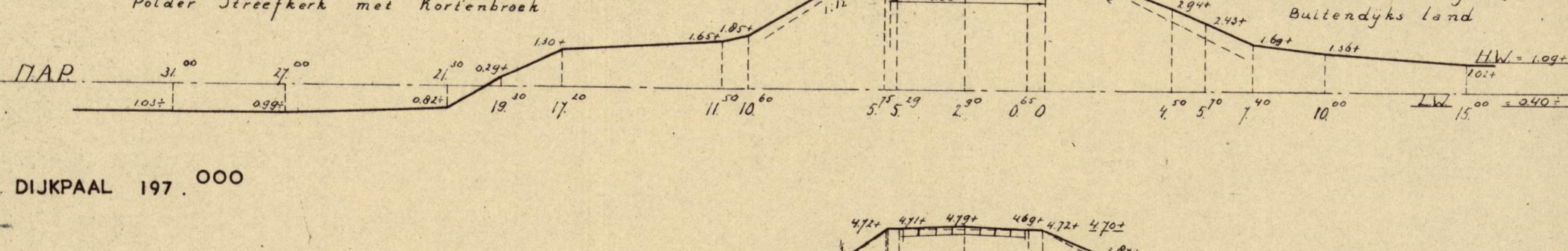
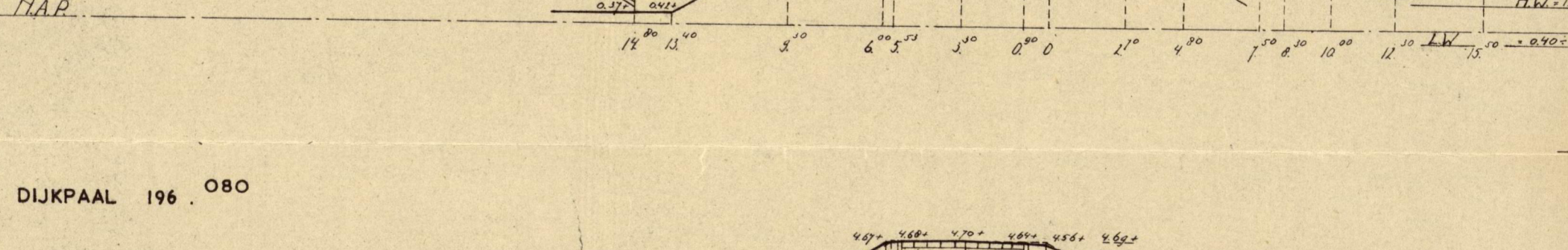
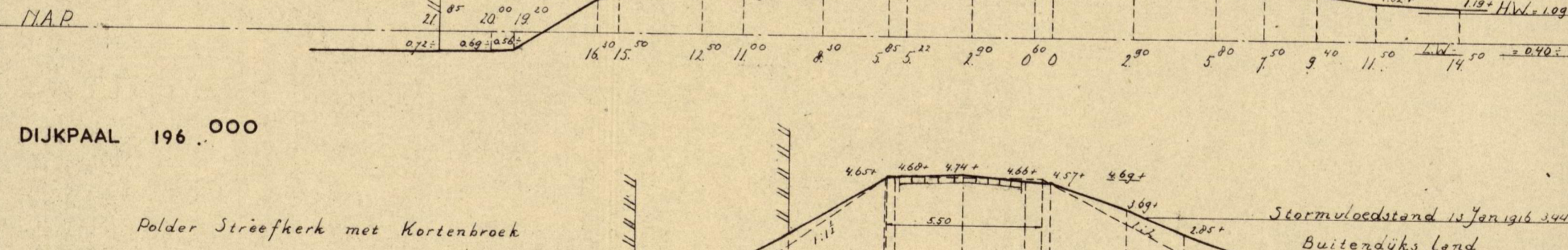
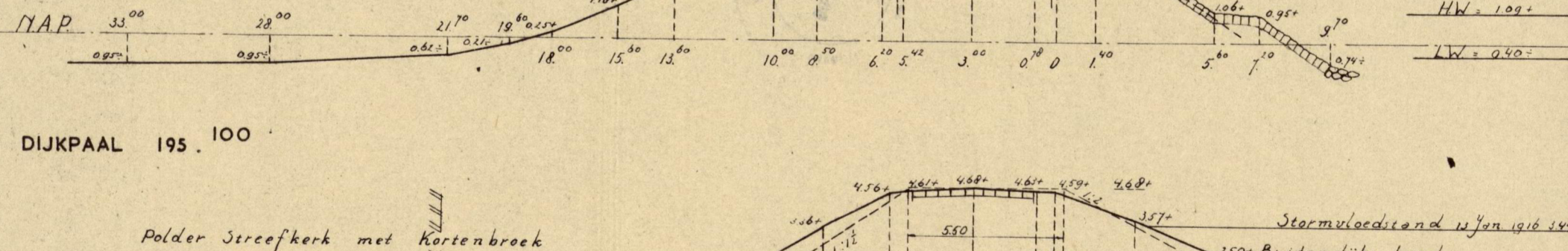
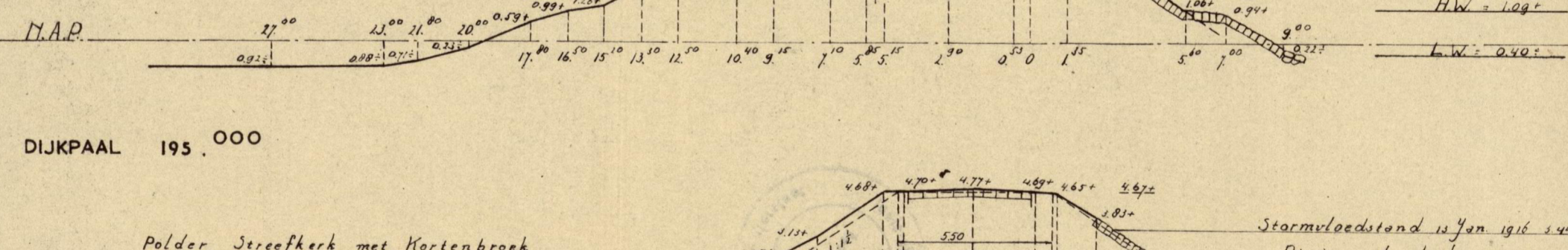
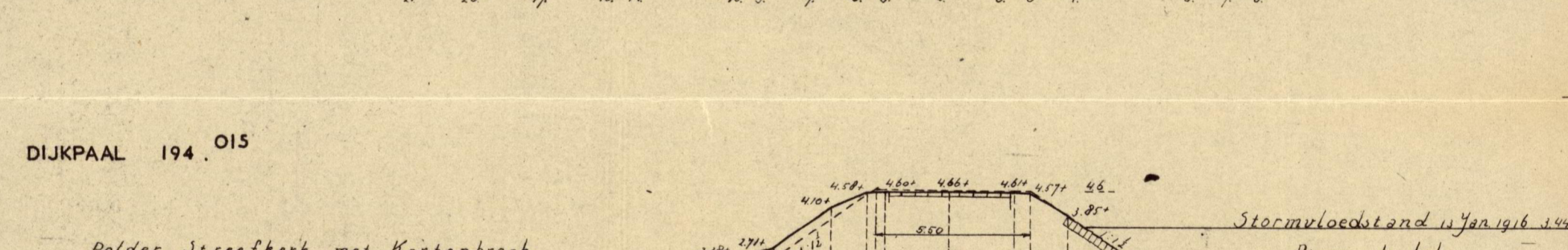
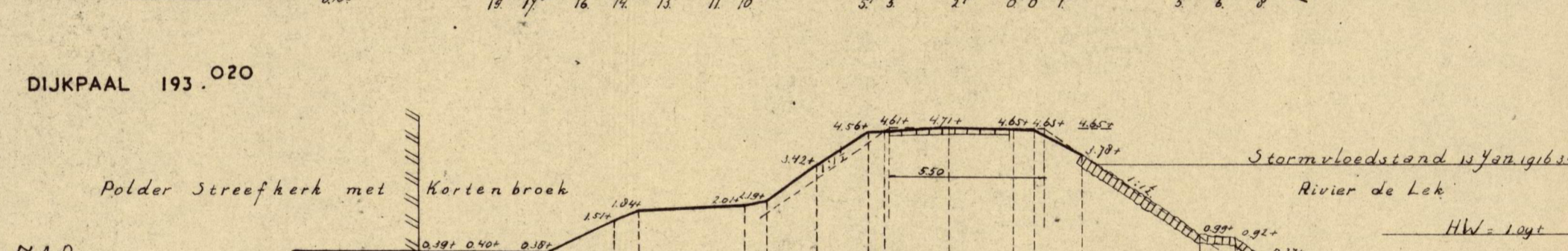
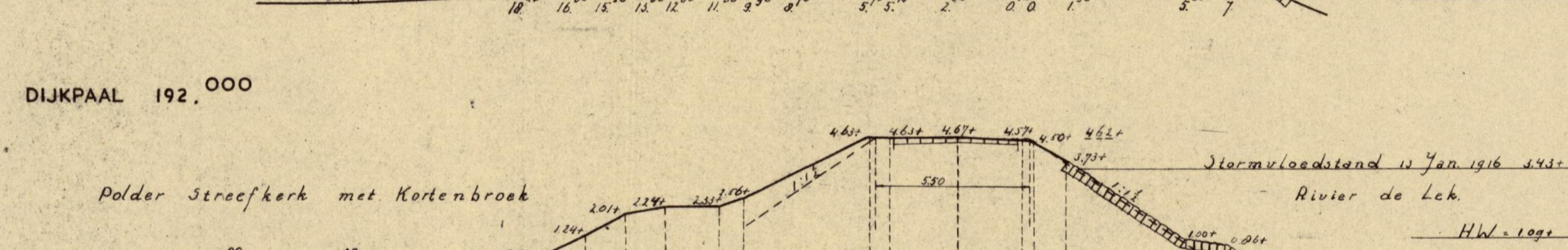
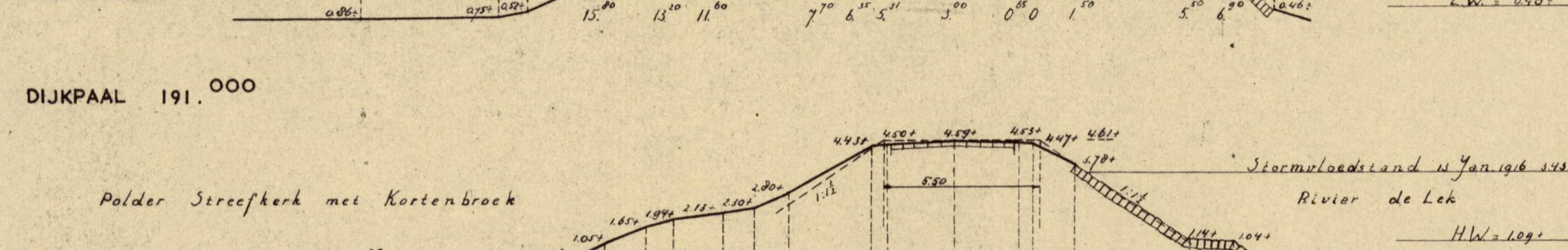
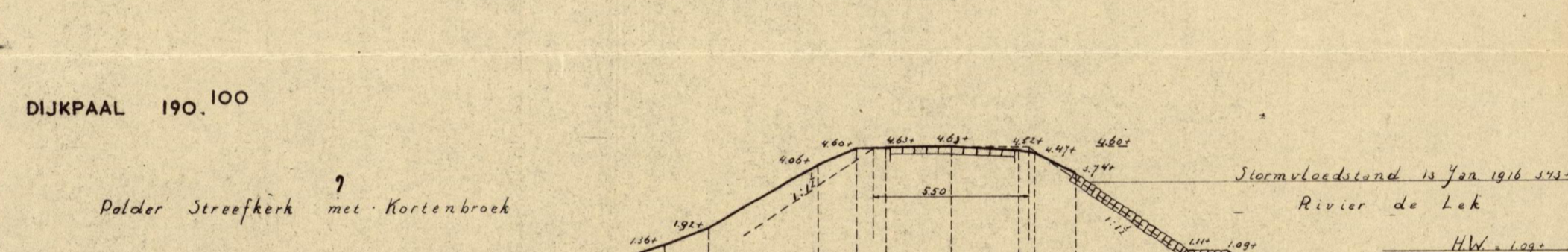
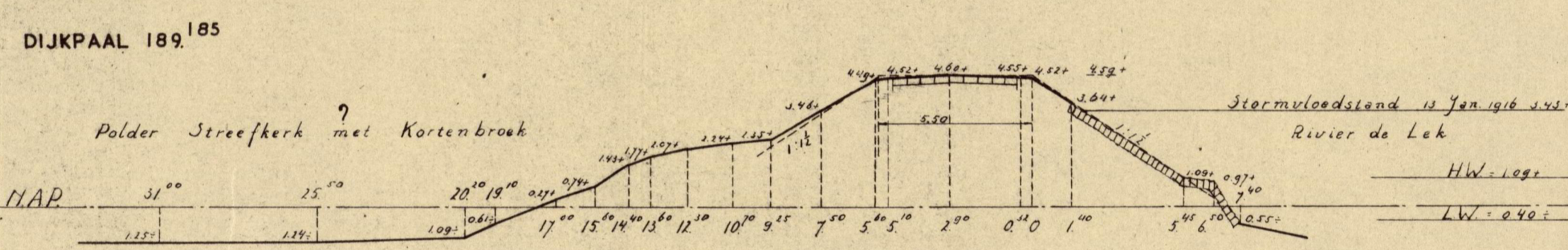
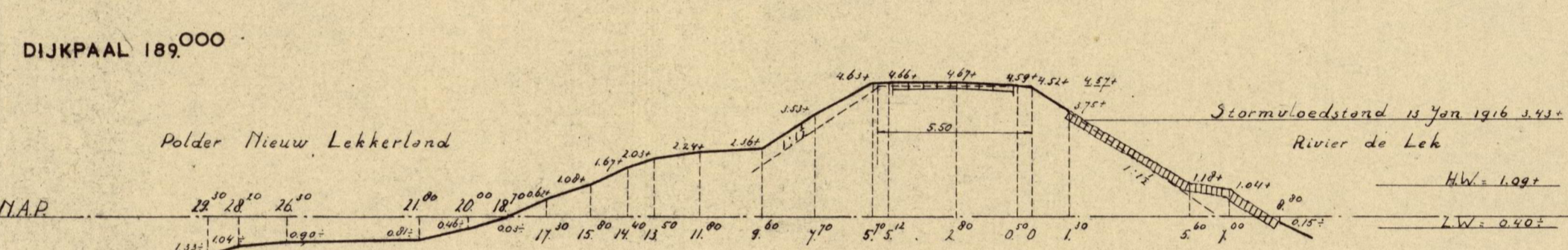
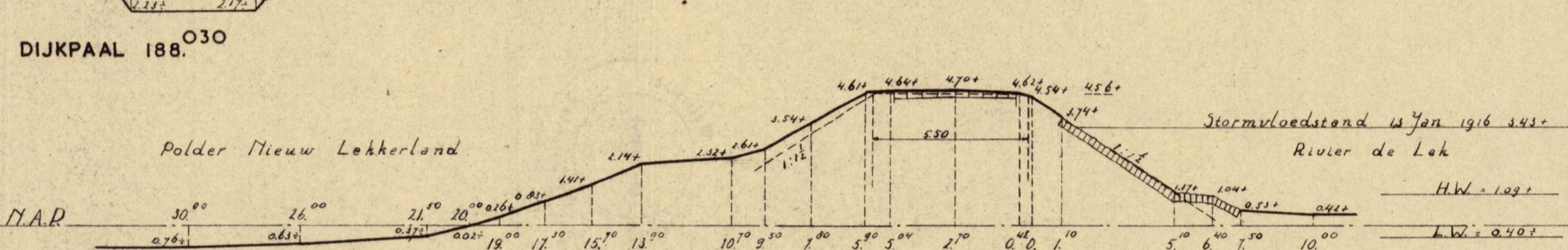
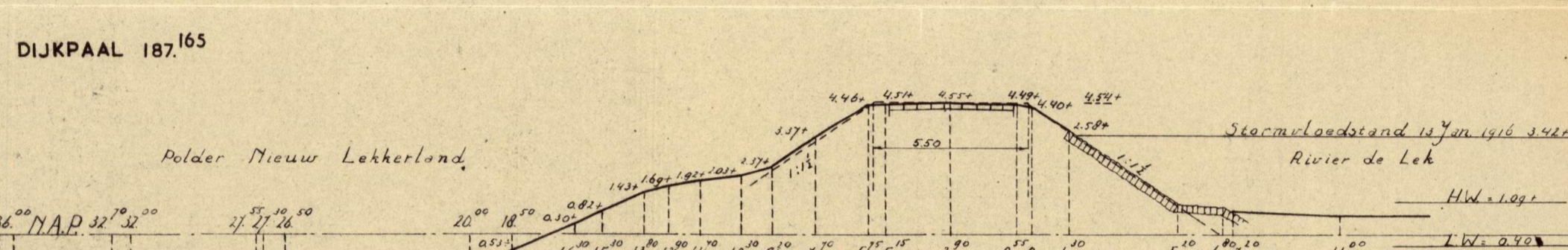
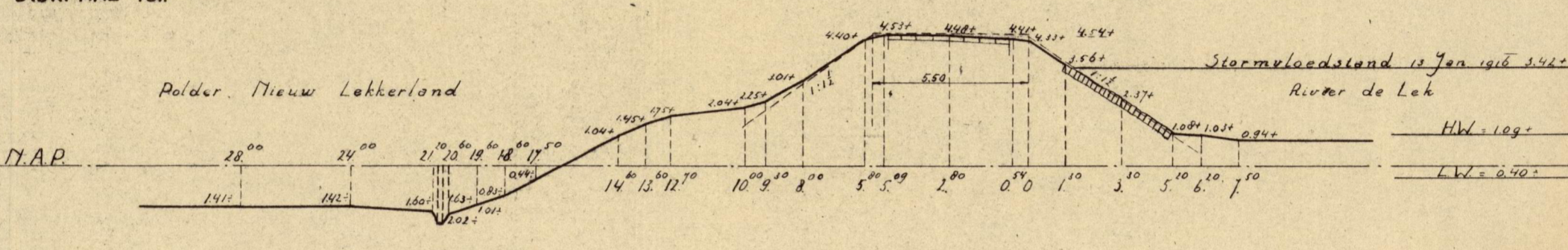
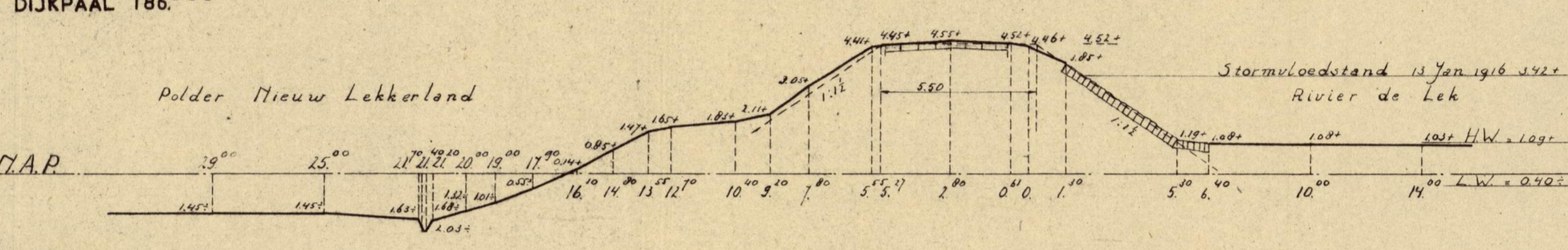
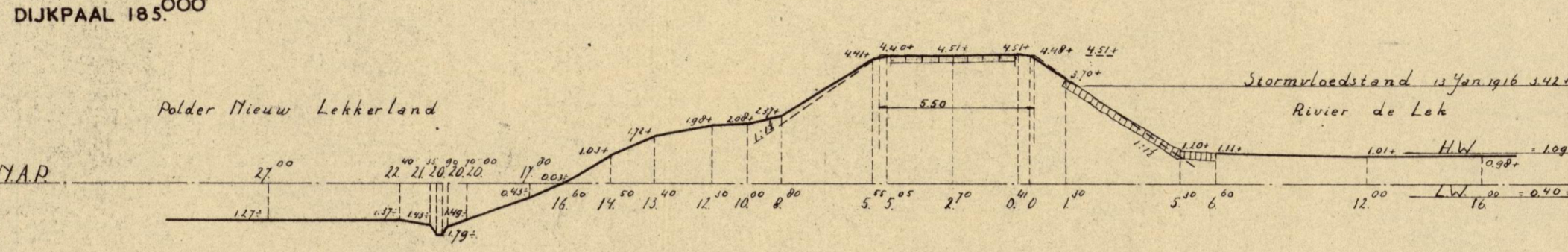
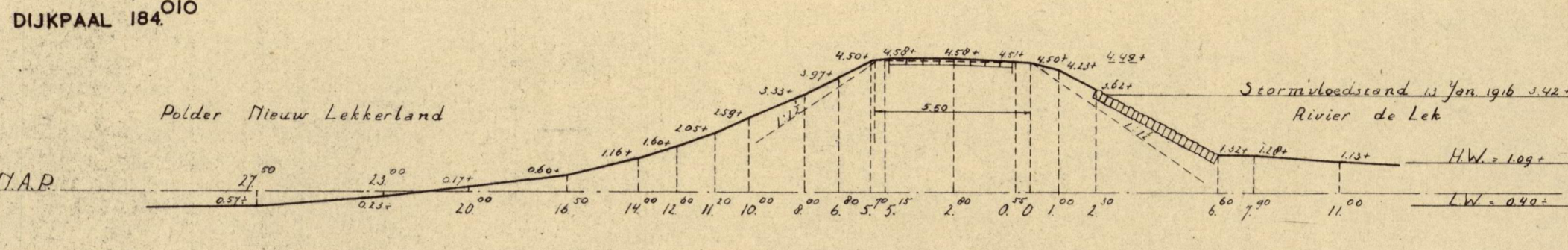
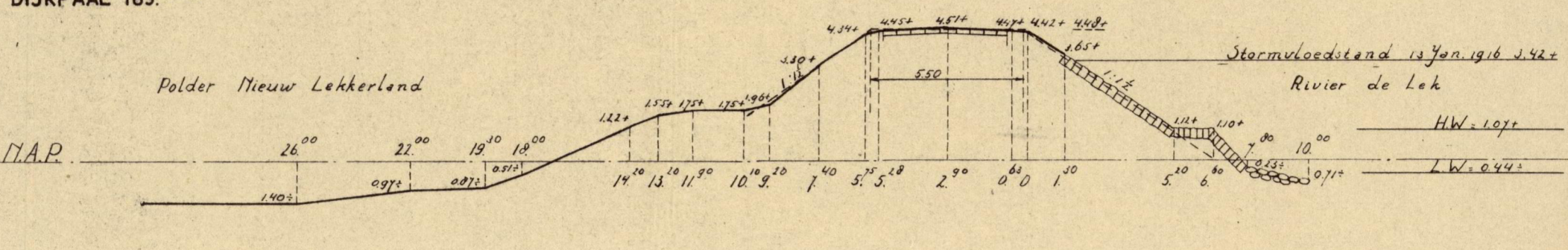
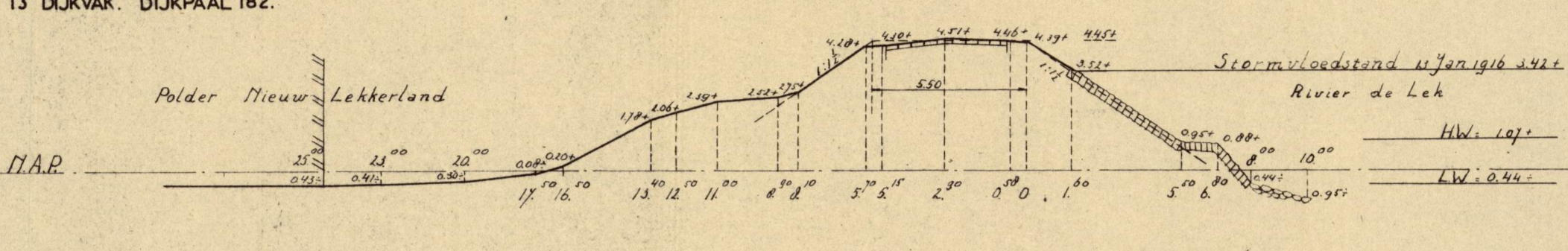
DWARSPROFIELEN VAN DE RIVIERWATERKERENDE DIJKEN VAN HET HOOGHEEMRAADSCHAP VAN DE ALBLASSERWAARD MET ARKEL BENEDEEN DE ZOUWE

13^E DIJKVAK
SCHAAL 1:200



VERKLARING:

— DWARSPROFIEL VOLGENS WATERPASSING VAN DE PROV. WATERSTAAT IN ZUID-HOLLAND IN 1947.
HOOGTE VOLGENS DIJKTAFEL.
— DWARSPROFIEL VOLGENS DIJKTAFEL.



RAPPORT N° 10. 1953

BULAGE E4
BLAD 9
A6 N° 53816 A



DWARSPROFIELEN VAN DE RIVERWATERKERENDE DIJKEN VAN HET HOOGHEEMRAADSCHAP VAN DE ALBLASSERWAARD MET ARKEL BENEDEN DE ZOUWE

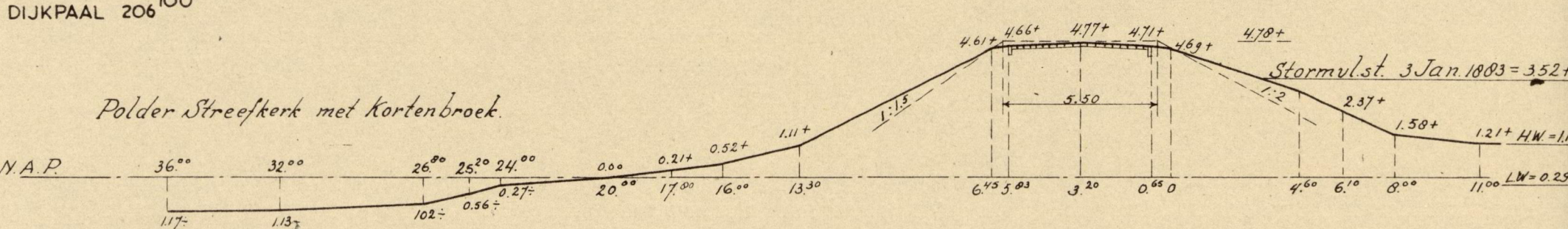
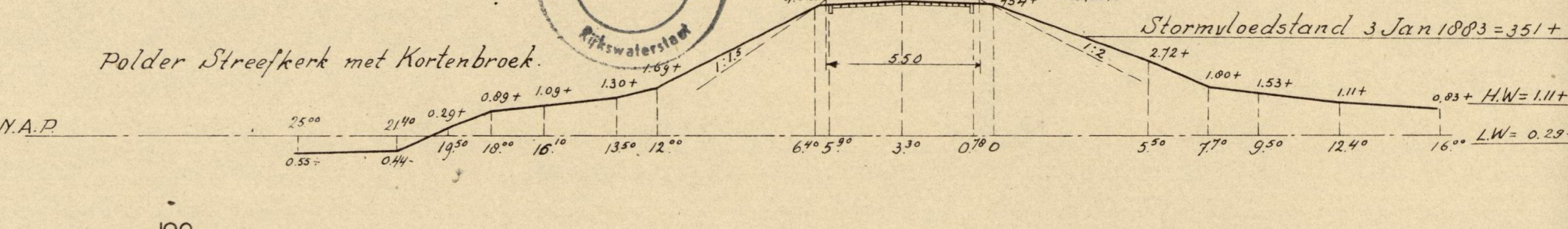
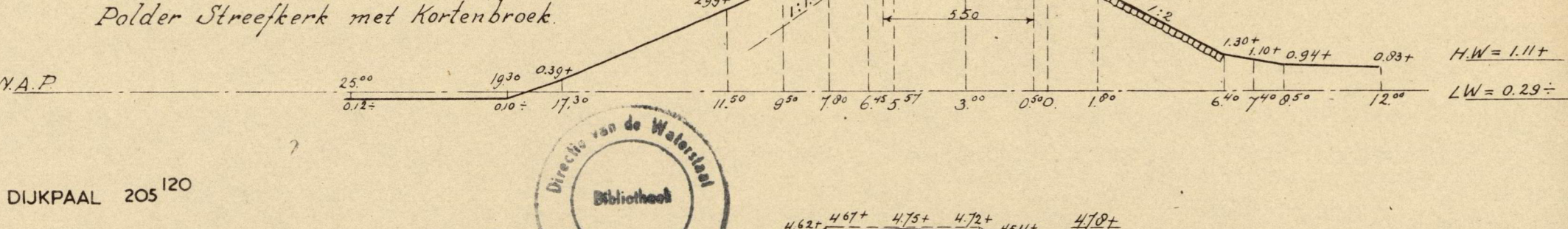
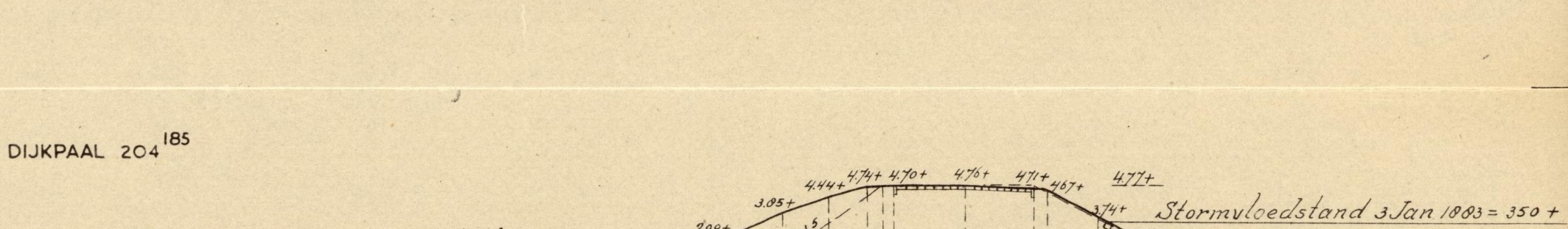
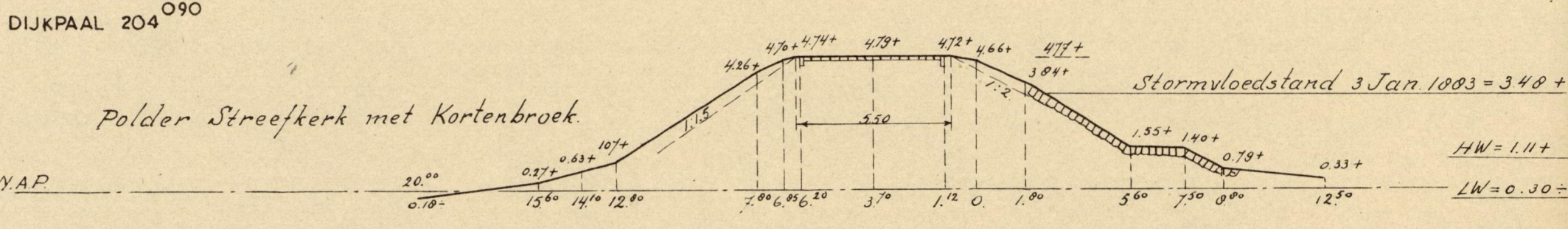
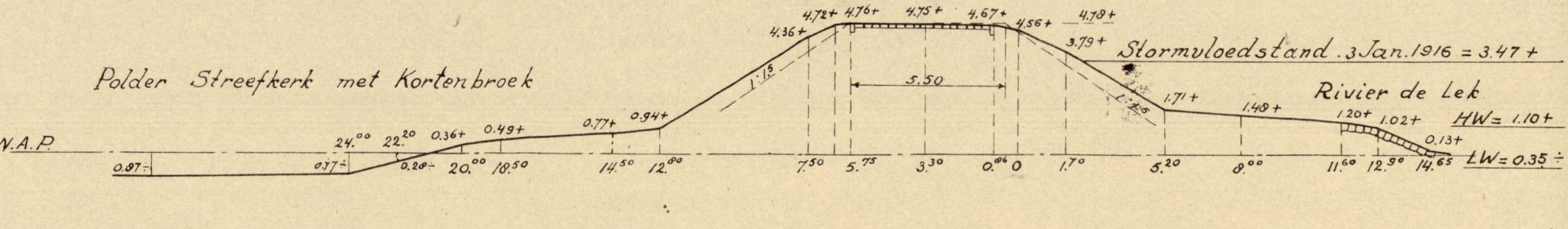
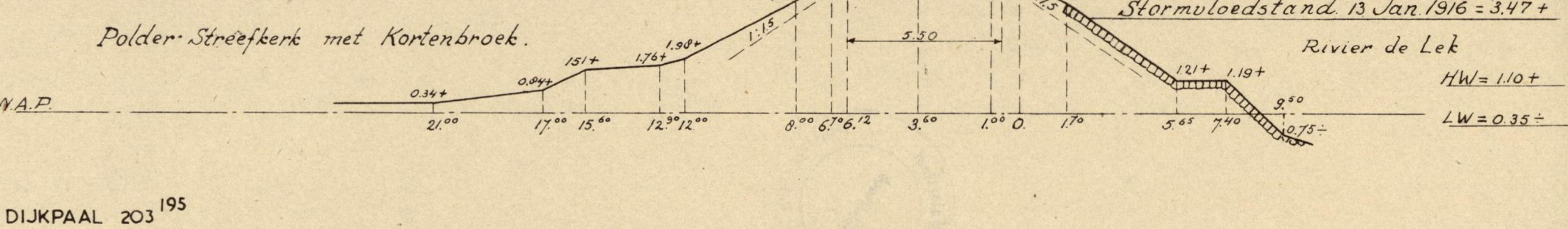
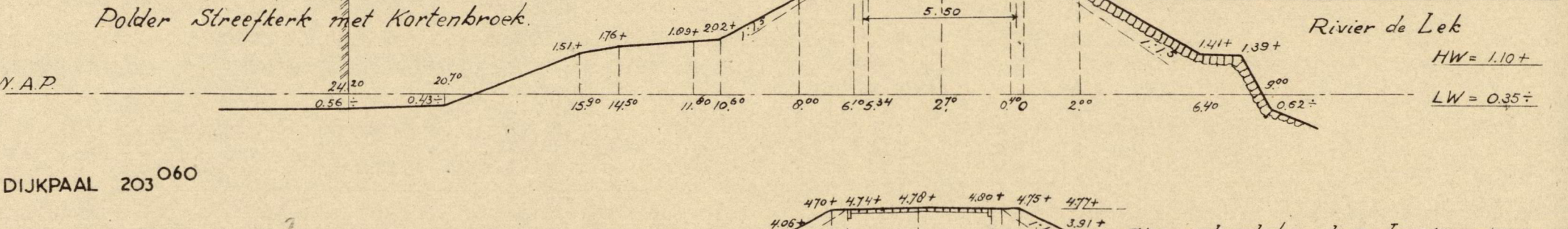
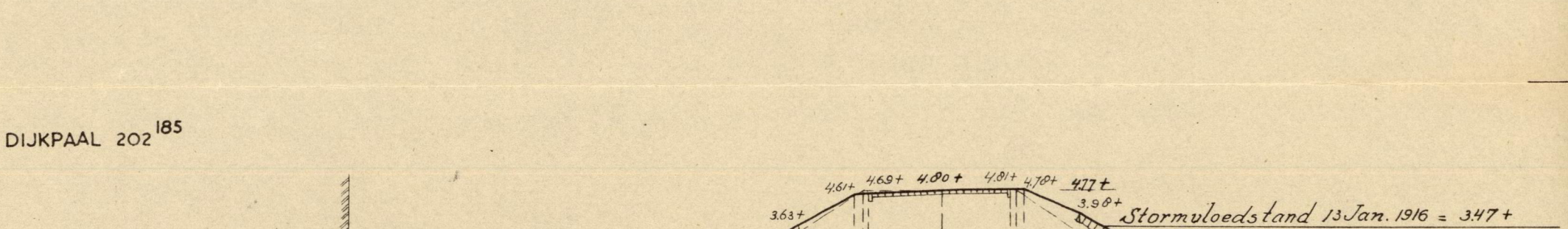
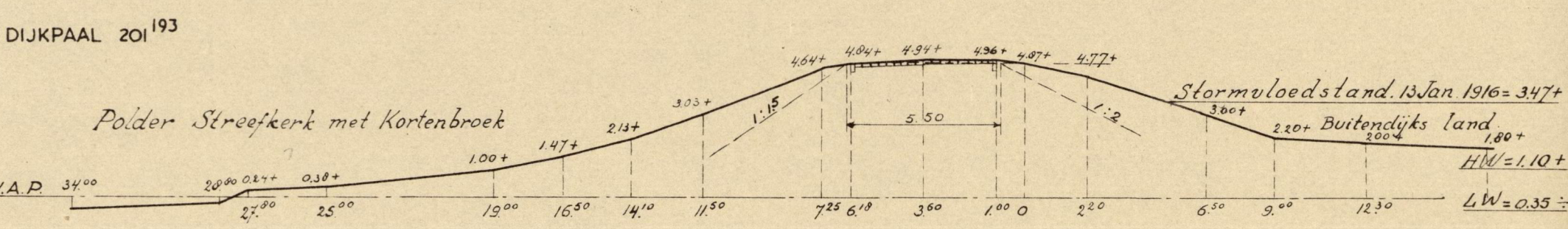
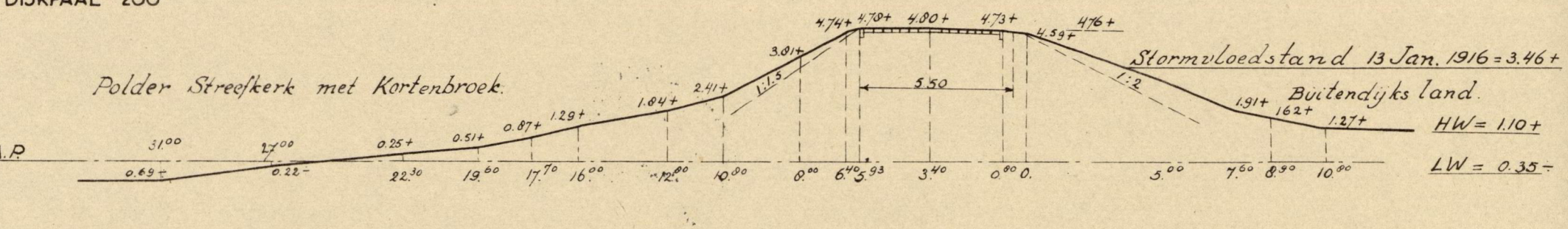
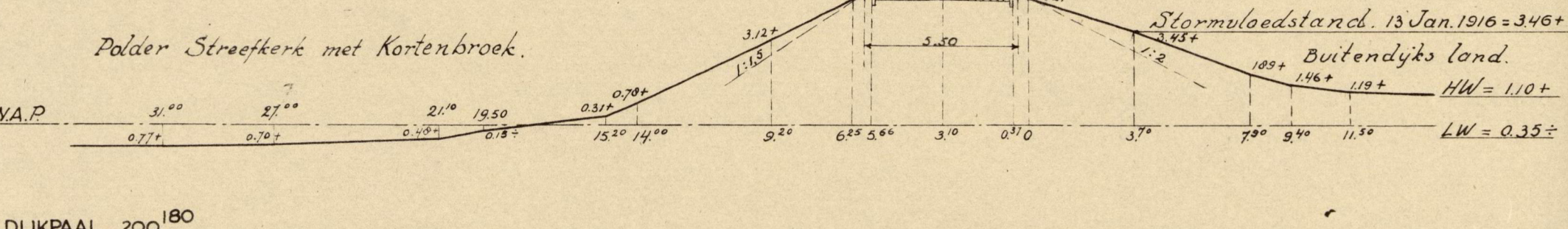
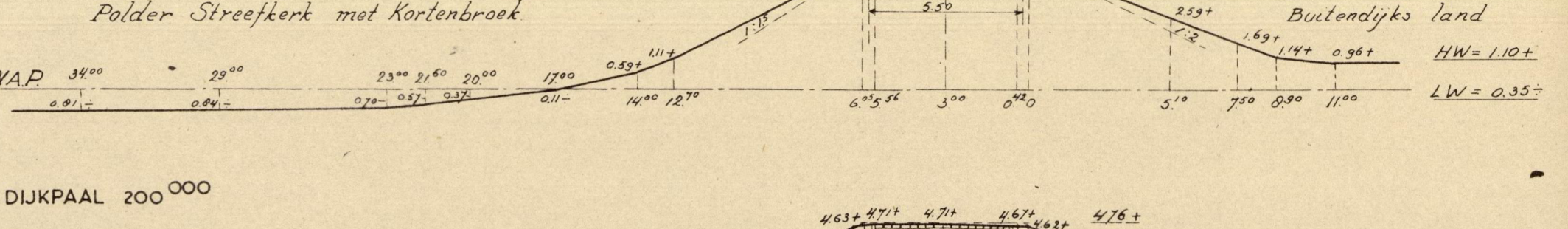
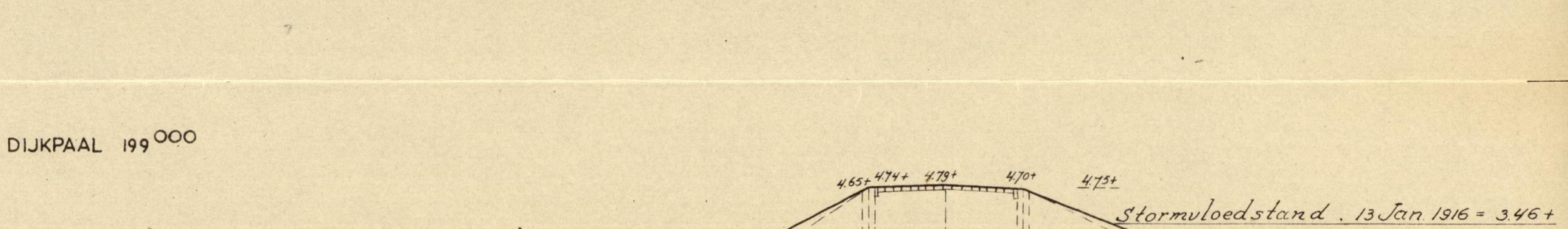
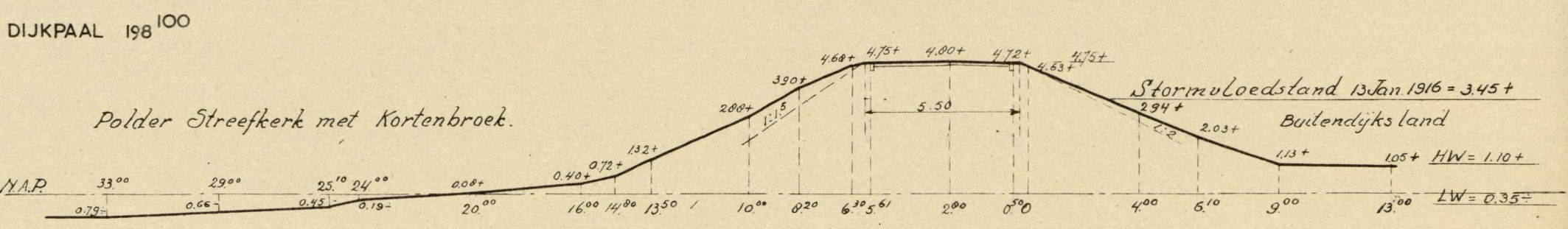
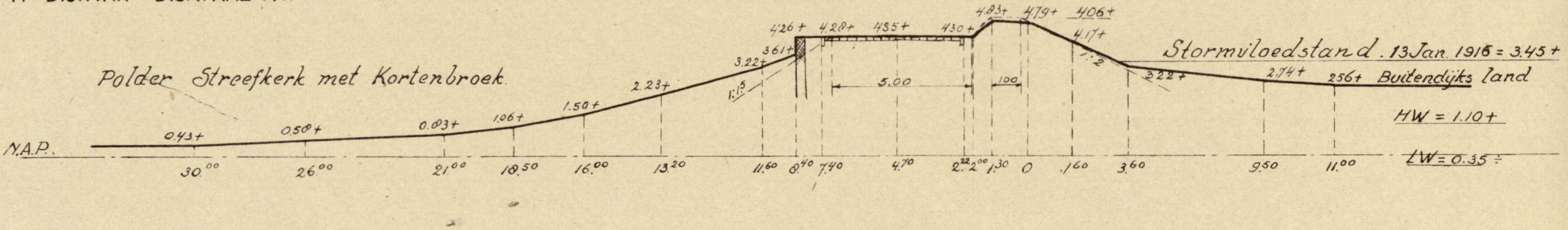
14^E DIJKVAK
SCHAAL 1:200



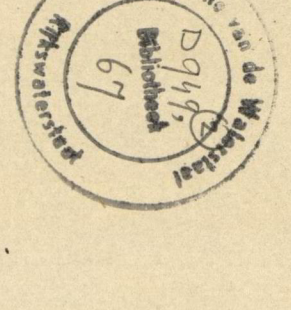
VERKLARING:

— DWARSPROFIEL VOLGENS WATERPASSING VAN DE PROV. WATERSTAAT IN ZUID-HOLLAND IN 1947.
— HOOGTE VOLGENS DIJKTAFEL.
- - - DWARSPROFIEL VOLGENS DIJKTAFEL.

14^E DIJKVAK DIJKPAAL 197¹⁵⁰ LEKDIJK (LENGTE 2423M)



RAPPORT NO. 10. 1953
BULAGE E4
BLAD 10 A5
Nr. 53.817



DWARSPROFIELEN VAN DE RIVERWATERKERENDE DIJKEN VAN HET HOOGHEEMRAADSCHAP VAN DE ALBLASSERWAARD MET ARKEL BENEDEN DE ZOUWE

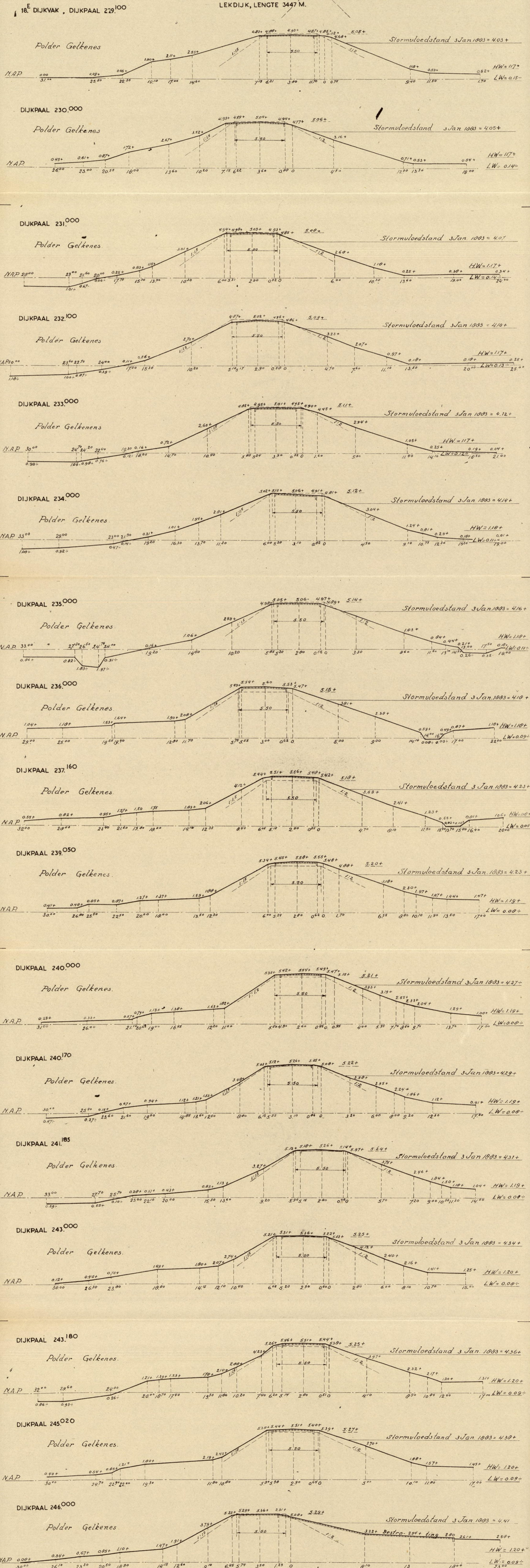
18^E DIJKVAK
SCHAAL 1 : 200



VERKLARING:

— DWARSPROFIEL VOLGENS WATERPASSING VAN DE PROV. WATERSTAAT IN ZUID-HOLLAND IN 1947.
HOOGTE VOLGENS DIJKTAFEL.
— DWARSPROFIEL VOLGENS DIJKTAFEL.

LEKDIJK, LENGTE 3447 M.



DWARSPROFIELEN VAN DE RIVERWATERKERENDE DIJKEN VAN HET HOOGHEEMRAADSCHAP VAN DE ALBLASSERWAARD MET ARKEL BENEDEN DE ZOUWE

19^E EN 20^E DIJKVAK
SCHAAL 1:200



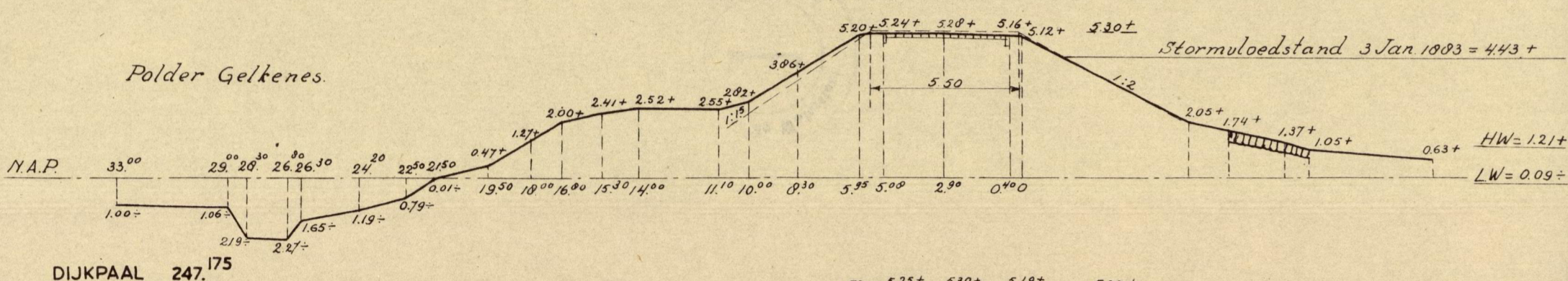
VERKLARING:

DWARSPROFIEL VOLGENS WATERPASSING VAN DE PROV. WATERSTAAT IN ZUID-HOLLAND IN 1947.
HOOGTE VOLGENS DIJKTAFEL.
DWARSPROFIEL VOLGENS DIJKTAFEL.

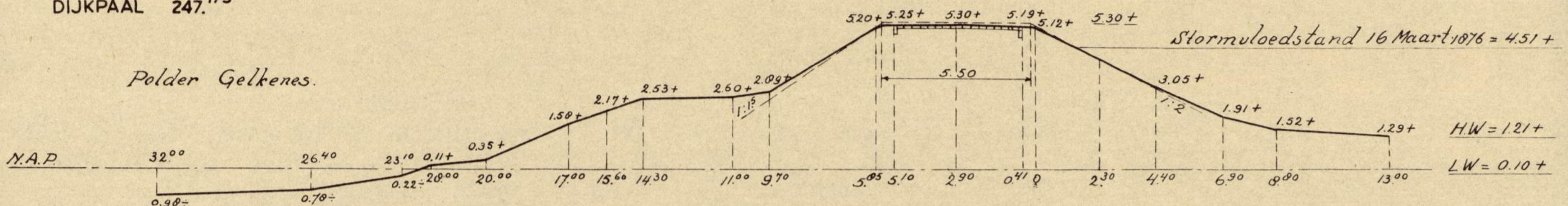
19^E DIJKVAK, DIJKPAAL 246.140

LEKDIJK, LENGTE 1028 M.

Polder Gelkenes.

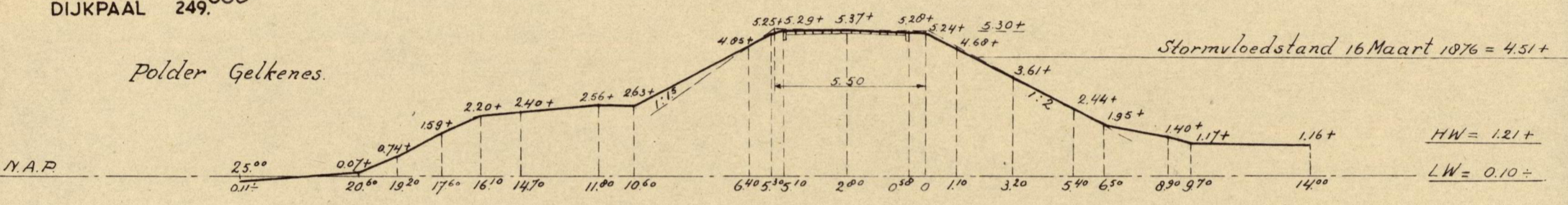


Polder Gelkenes.



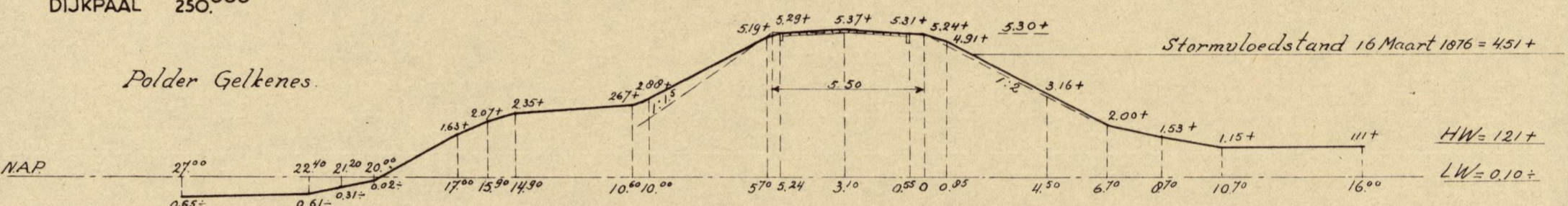
DIJKPAAL 249.000

Polder Gelkenes.



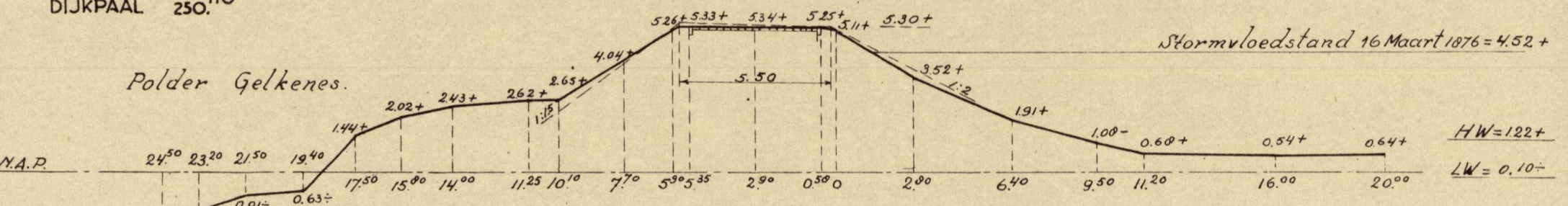
DIJKPAAL 250.000

Polder Gelkenes.



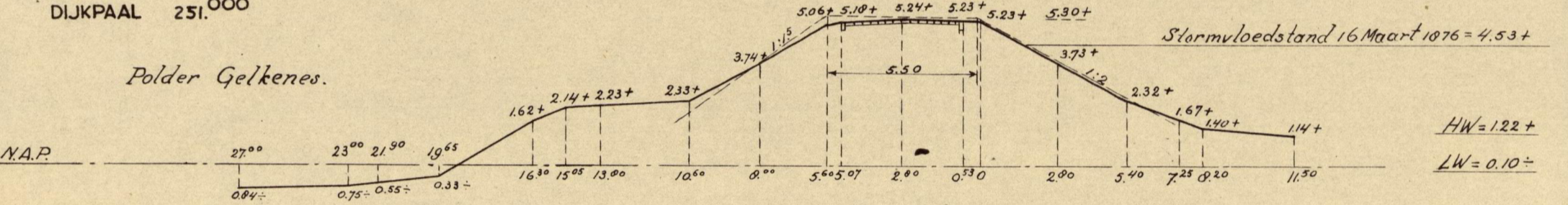
DIJKPAAL 250.110

Polder Gelkenes.



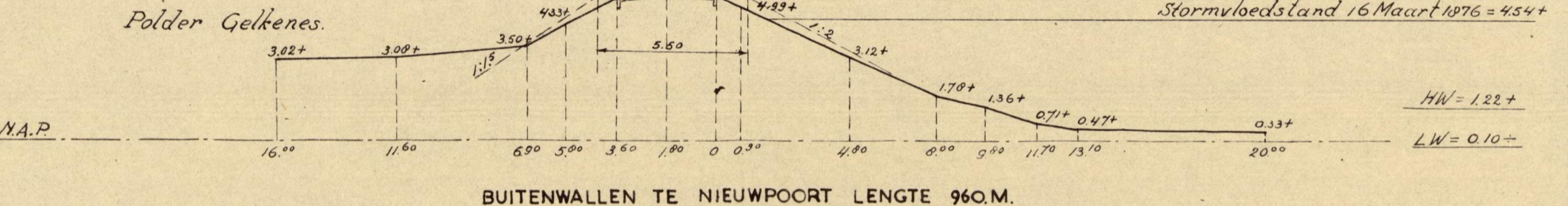
DIJKPAAL 251.000

Polder Gelkenes.



DIJKPAAL 251.100

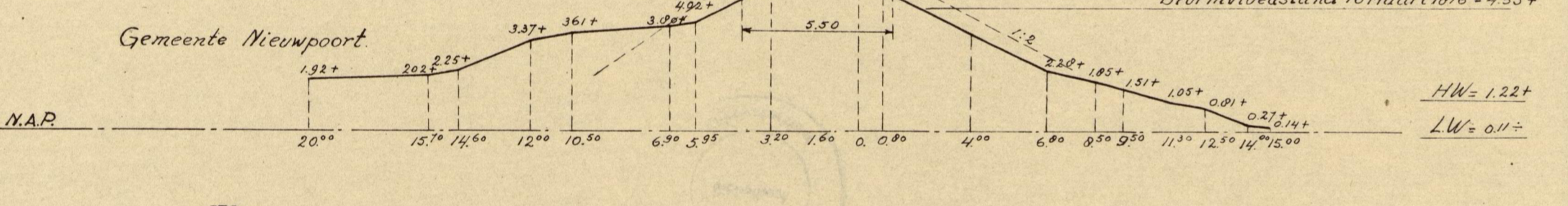
Polder Gelkenes.



BUITENWALLEN TE NIEUWPOORT LENGTE 960 M.

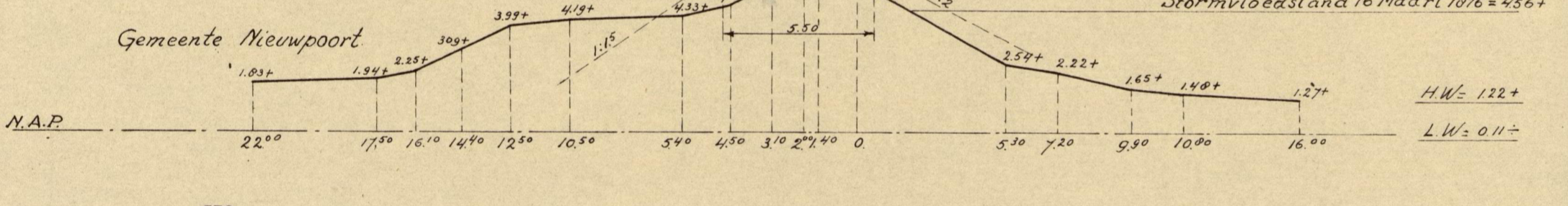
20^E DIJKVAK, DIJKPAAL 251.270

Gemeente Nieuwpoort.



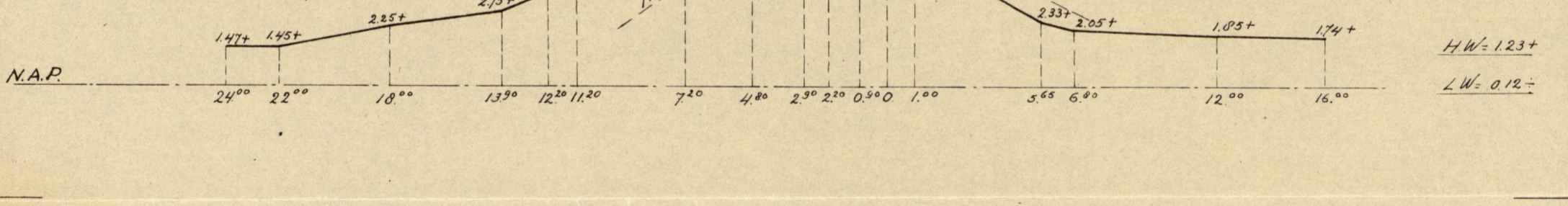
DIJKPAAL 251.370

Gemeente Nieuwpoort.



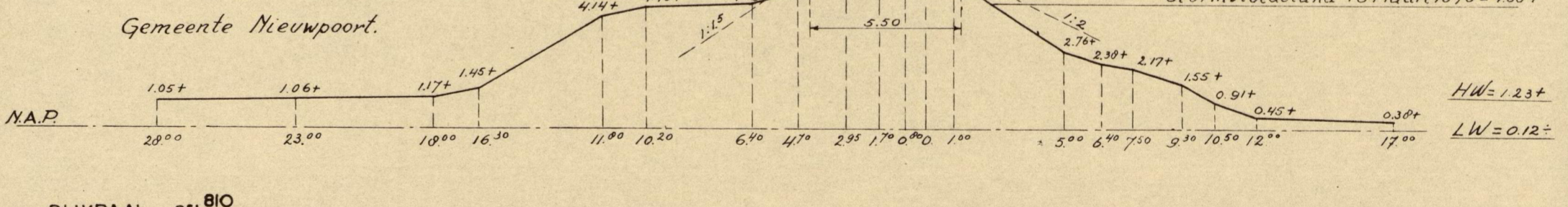
DIJKPAAL 251.570

Gemeente Nieuwpoort.



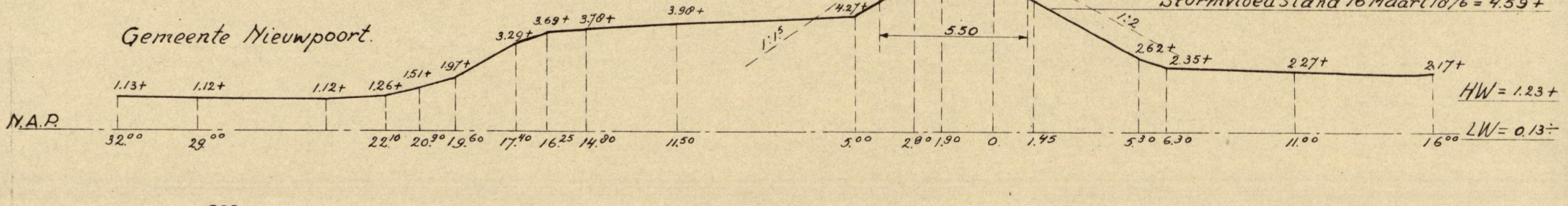
DIJKPAAL 251.650

Gemeente Nieuwpoort.



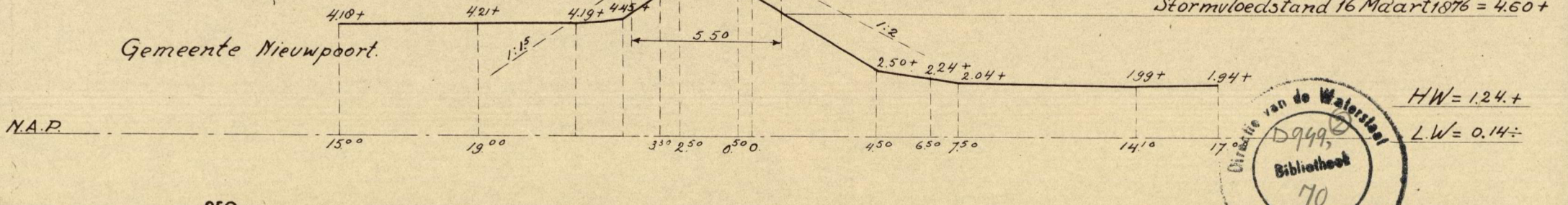
DIJKPAAL 251.810

Gemeente Nieuwpoort.



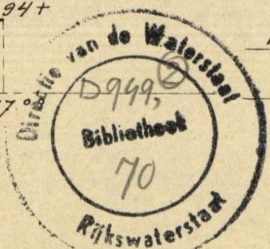
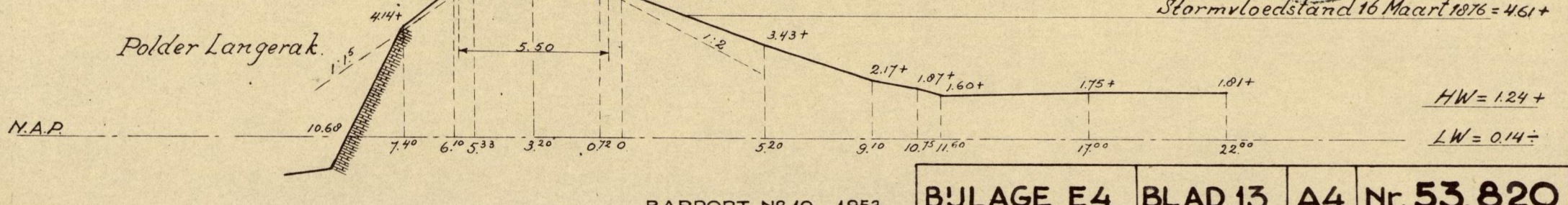
DIJKPAAL 251.895

Gemeente Nieuwpoort.



DIJKPAAL 251.950

Polder Langerak.



DWARSPROFIELEN VAN DE RIVERWATERKERENDE DIJKEN VAN HET HOOGHEEMRAADSCHAP VAN DE ALBLASSERWAARD MET ARKEL BENEDEN DE ZOUWE

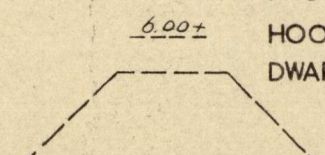
2^E DIJKVAK.

SCHAAL 1:200



VERKLARING:

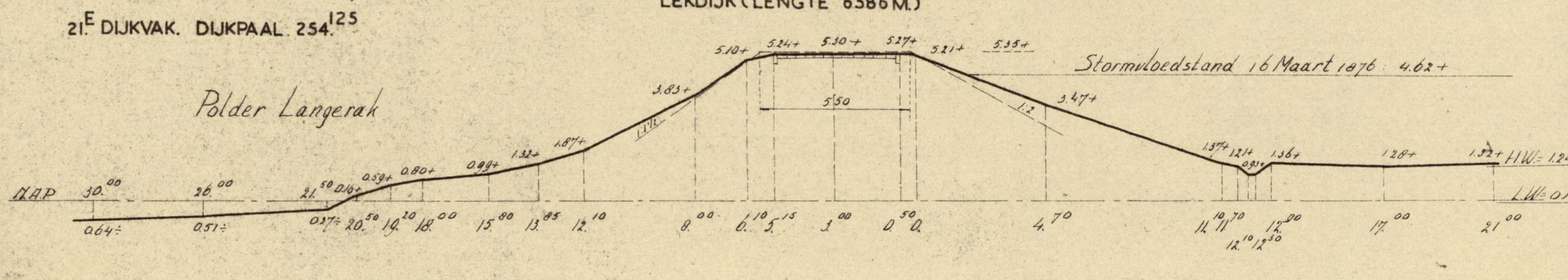
— DWARSPROFIEL VOLGENS WATERPASSING VAN DE PROV. WATERSTAAT IN ZUID-HOLLAND IN 1947.
- - - HOOGTE VOLGENS DIJKTAFEL.
- - - DWARSPROFIEL VOLGENS DIJKTAFEL.



2^E DIJKVAK. DIJKPAAL 254¹²⁵

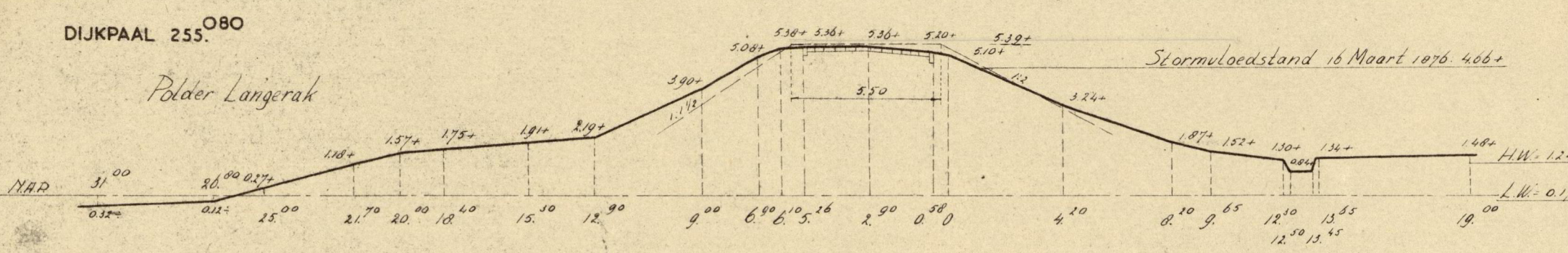
LEKDIJK (LENGTE 6586 M.)

Polder Langerak



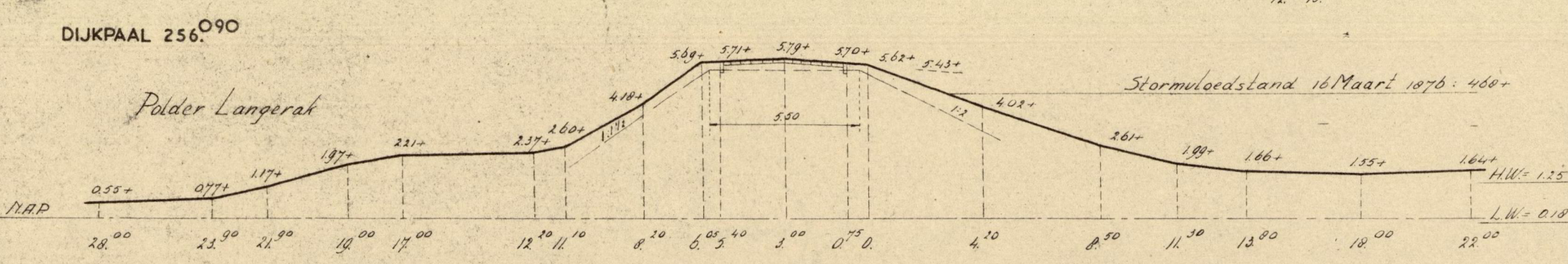
DIJKPAAL 255⁰⁸⁰

Polder Langerak



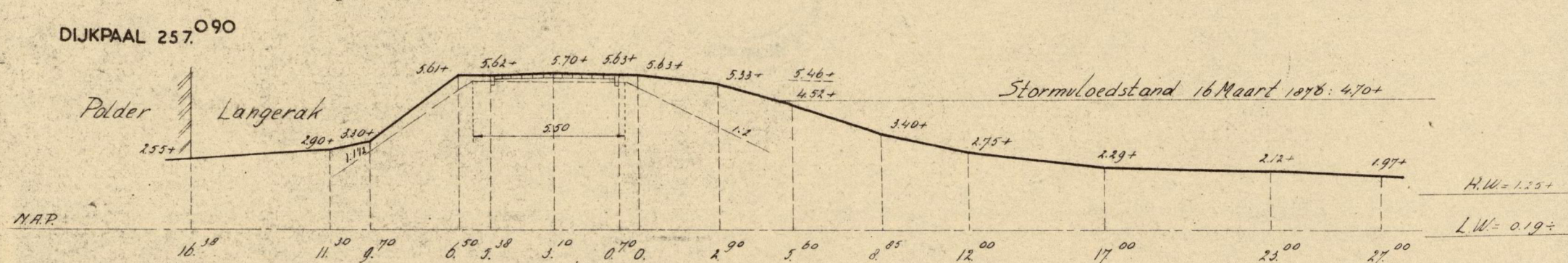
DIJKPAAL 256⁰⁹⁰

Polder Langerak



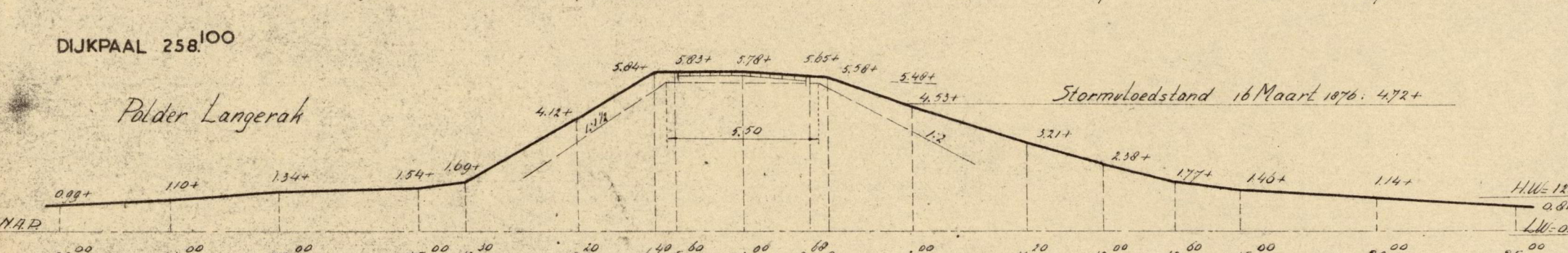
DIJKPAAL 257⁰⁹⁰

Polder Langerak



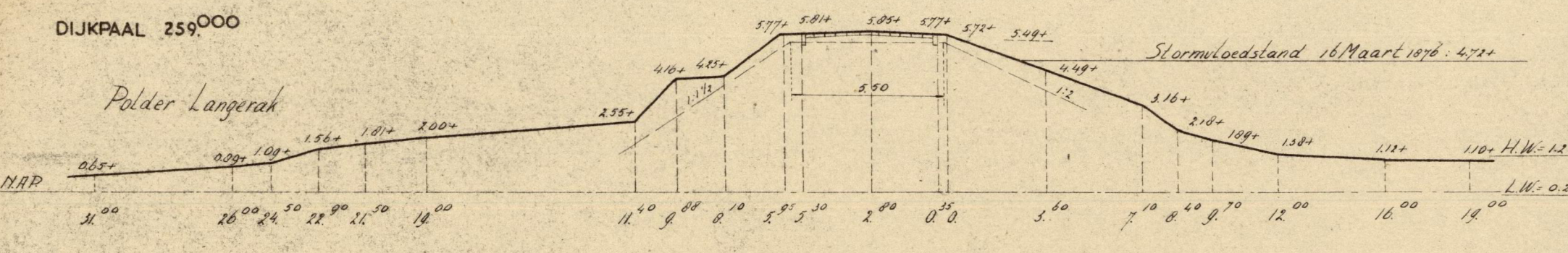
DIJKPAAL 258¹⁰⁰

Polder Langerak



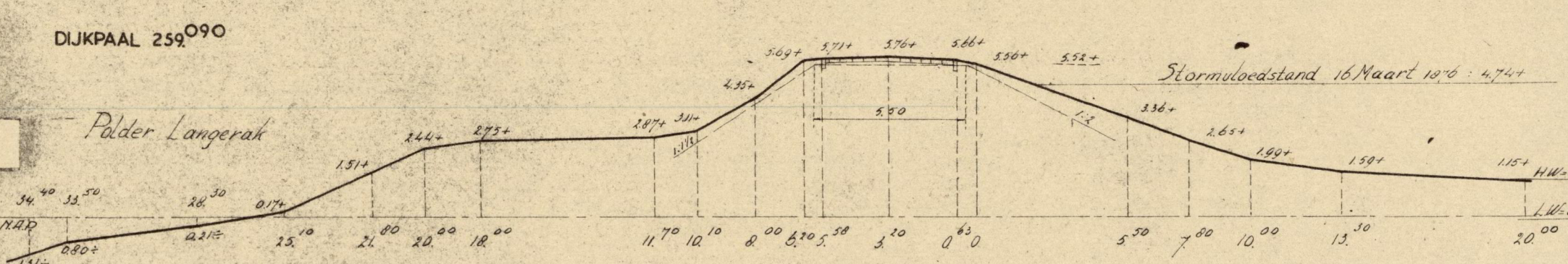
DIJKPAAL 259⁰⁰⁰

Polder Langerak



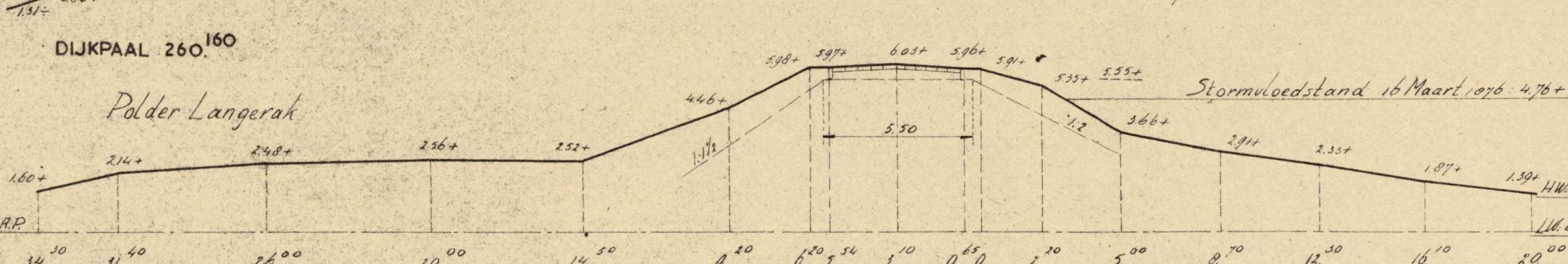
DIJKPAAL 259⁰⁹⁰

Polder Langerak



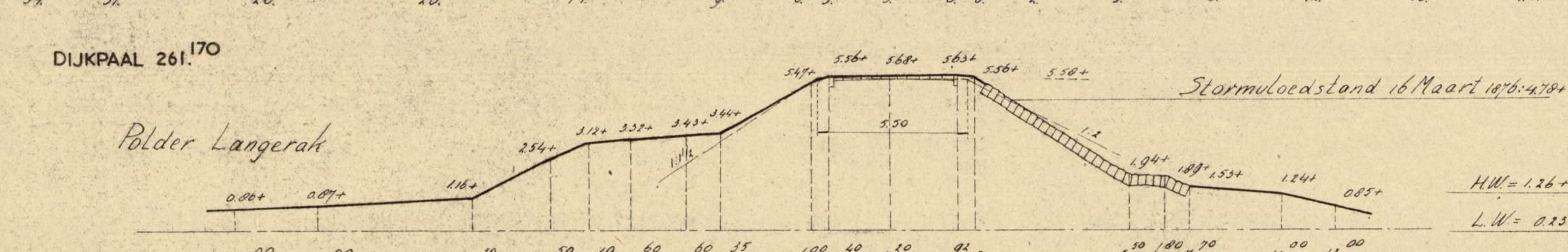
DIJKPAAL 260¹⁶⁰

Polder Langerak



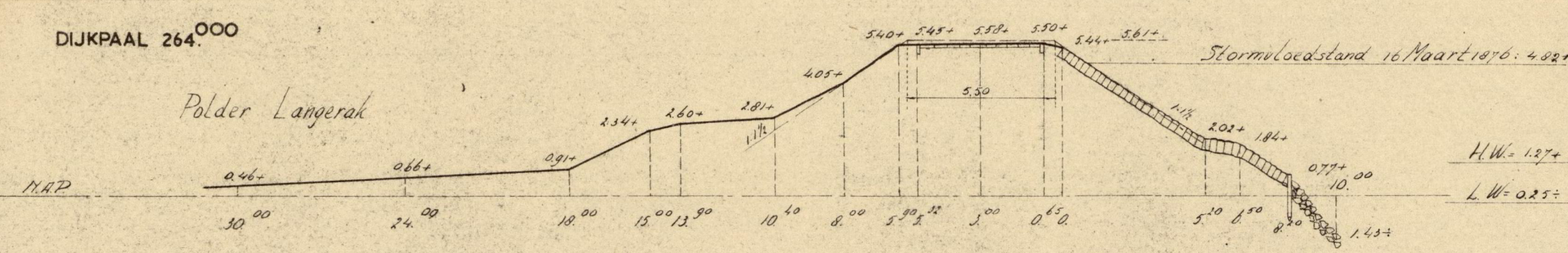
DIJKPAAL 261¹⁷⁰

Polder Langerak



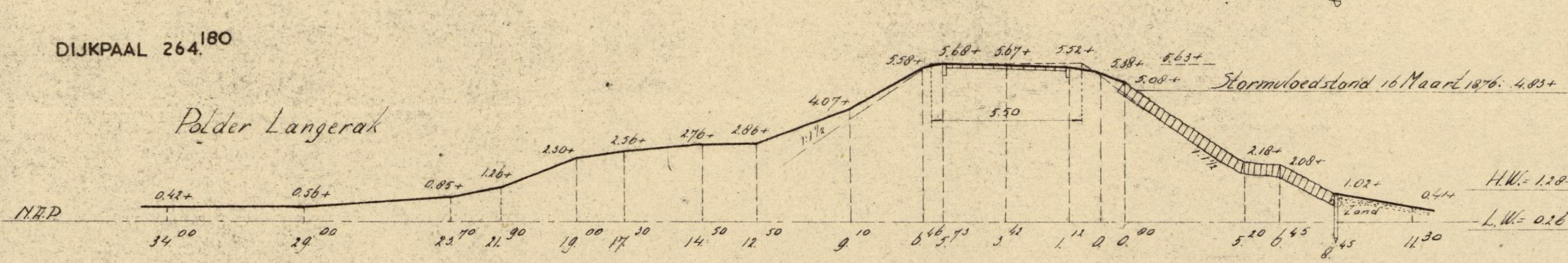
DIJKPAAL 264⁰⁰⁰

Polder Langerak



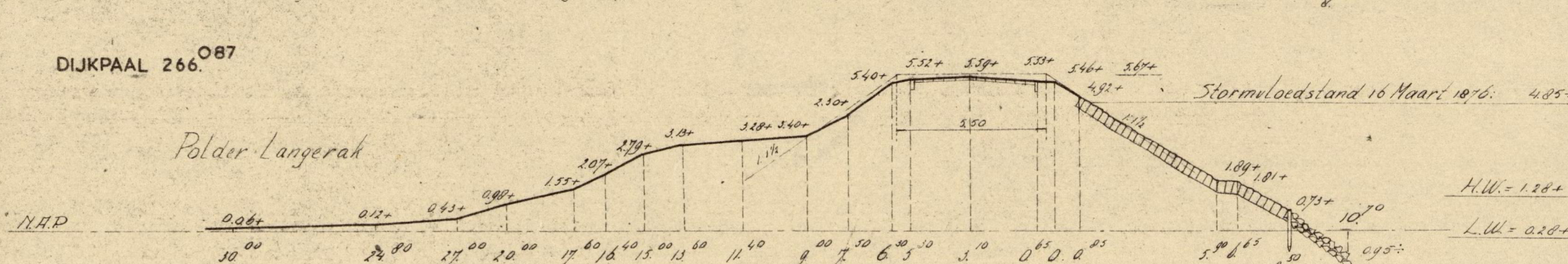
DIJKPAAL 264¹⁸⁰

Polder Langerak



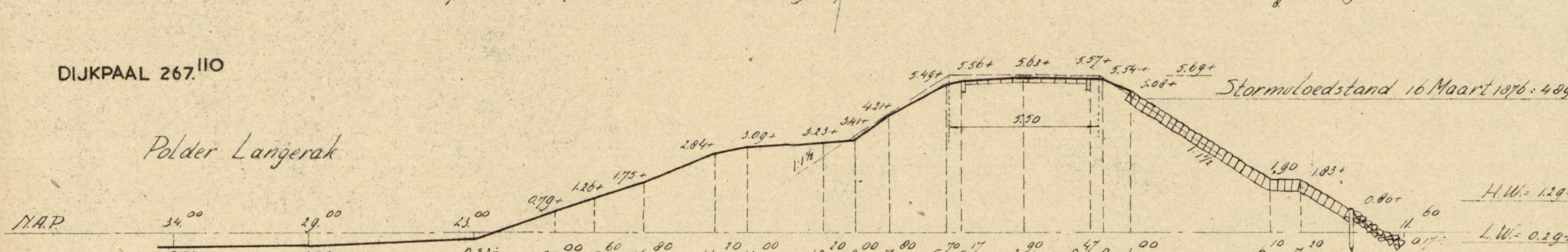
DIJKPAAL 266⁰⁸⁷

Polder Langerak



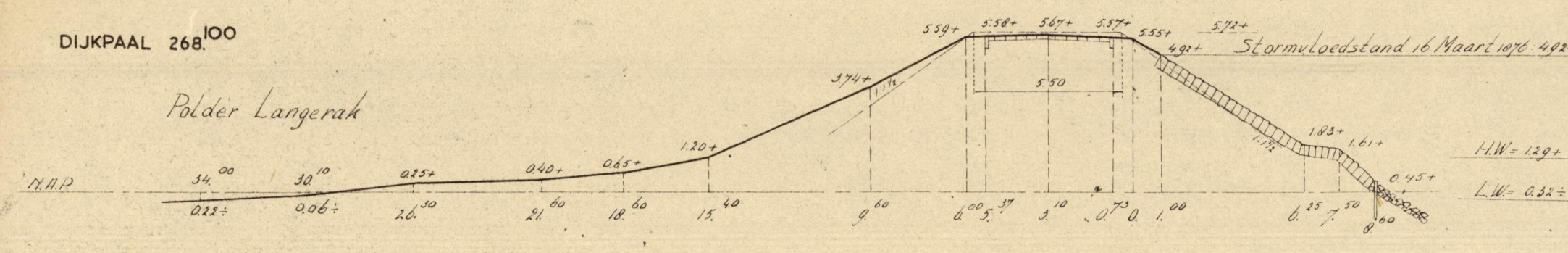
DIJKPAAL 267¹¹⁰

Polder Langerak



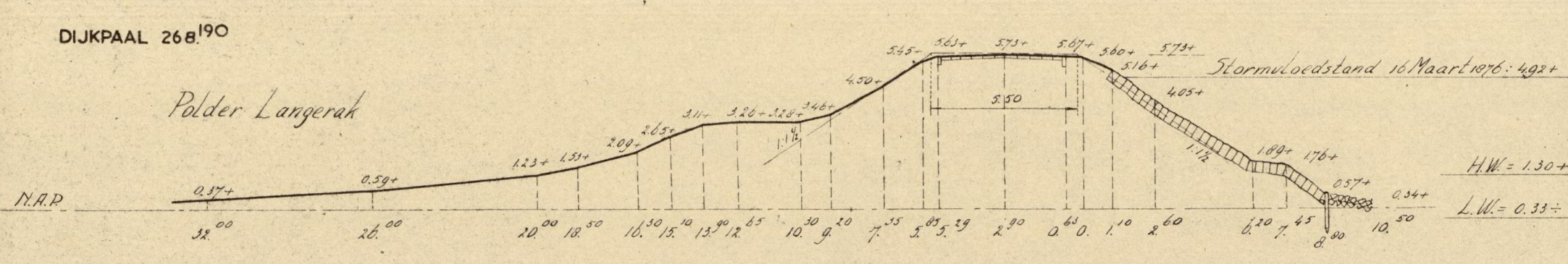
DIJKPAAL 268¹⁰⁰

Polder Langerak



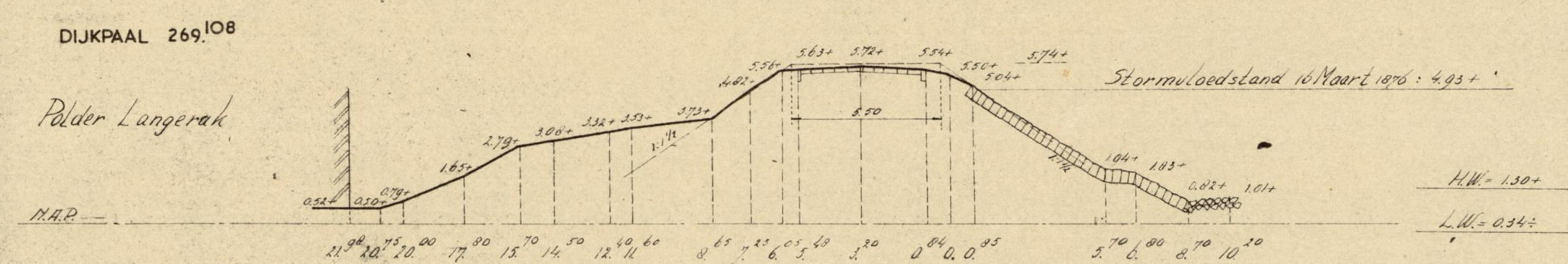
DIJKPAAL 268¹⁹⁰

Polder Langerak



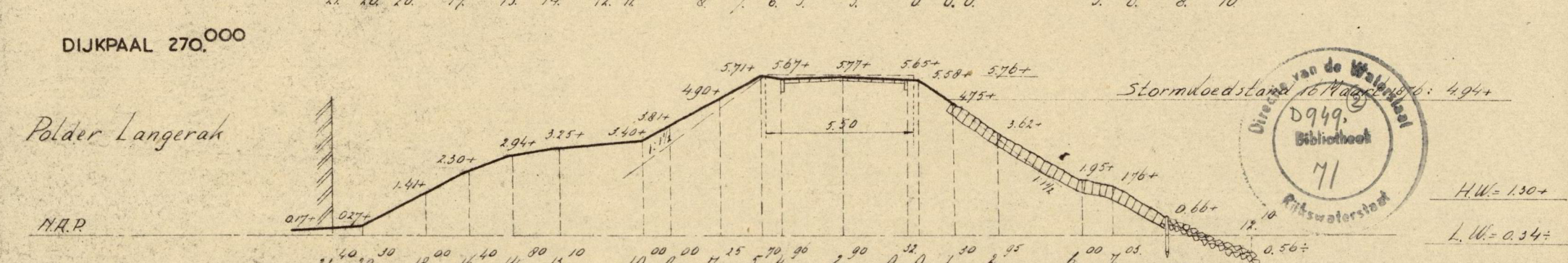
DIJKPAAL 269¹⁰⁸

Polder Langerak



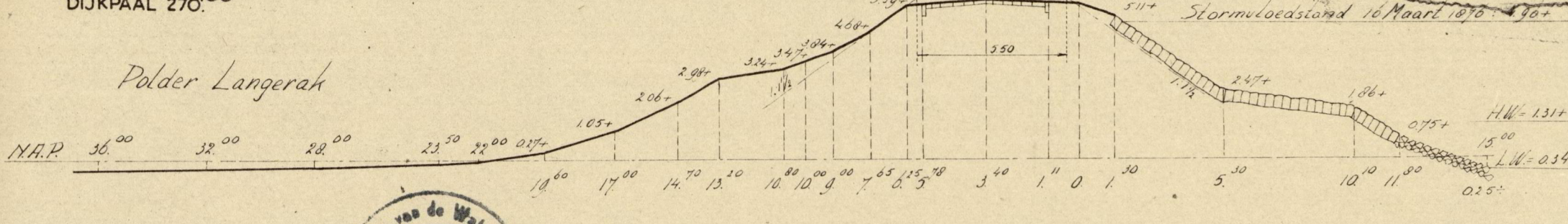
DIJKPAAL 270⁰⁰⁰

Polder Langerak



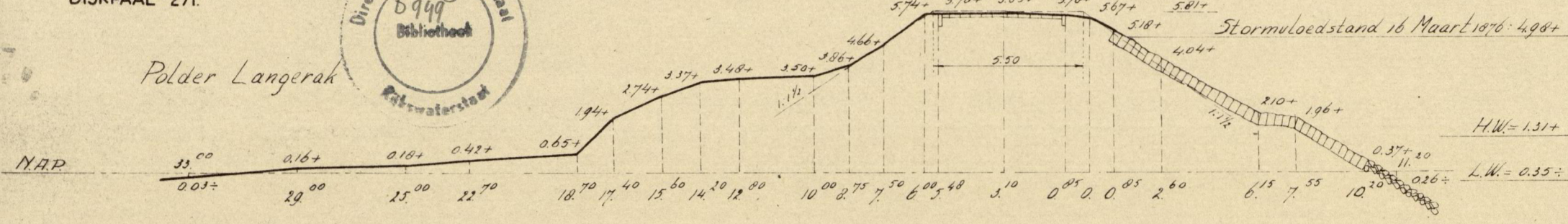
DIJKPAAL 270.100

Polder Langerak



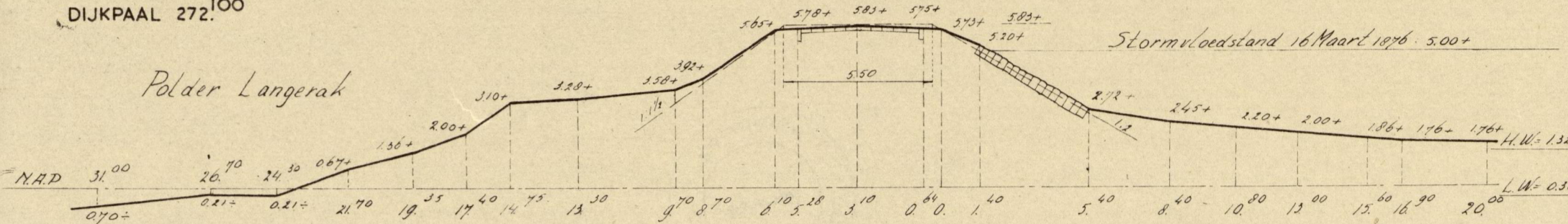
DIJKPAAL 271.100

Polder Langerak



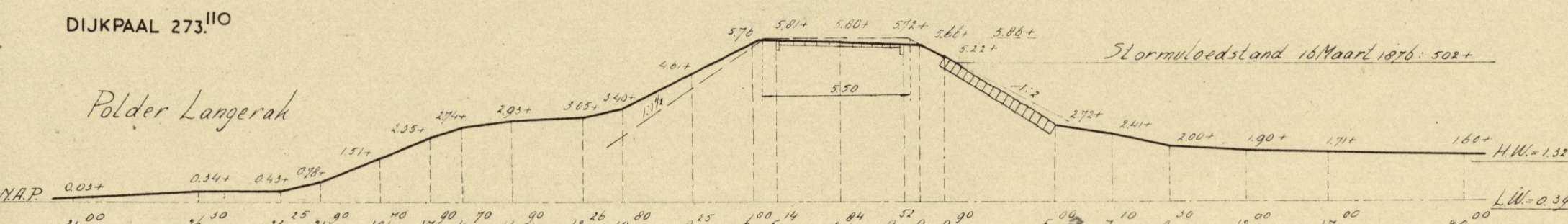
DIJKPAAL 272.100

Polder Langerak



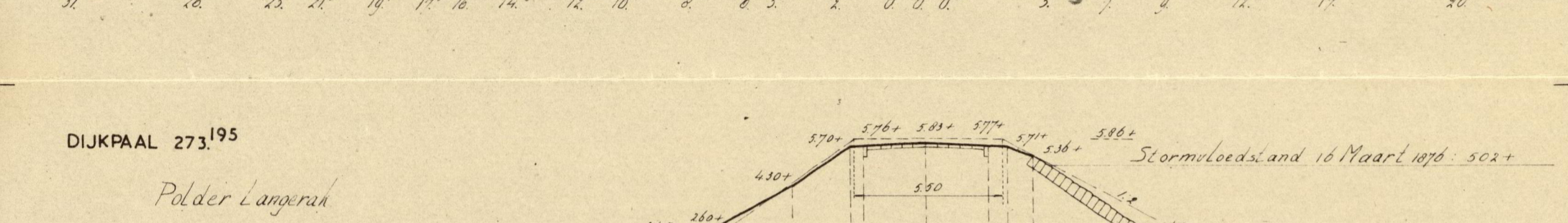
DIJKPAAL 273.110

Polder Langerak



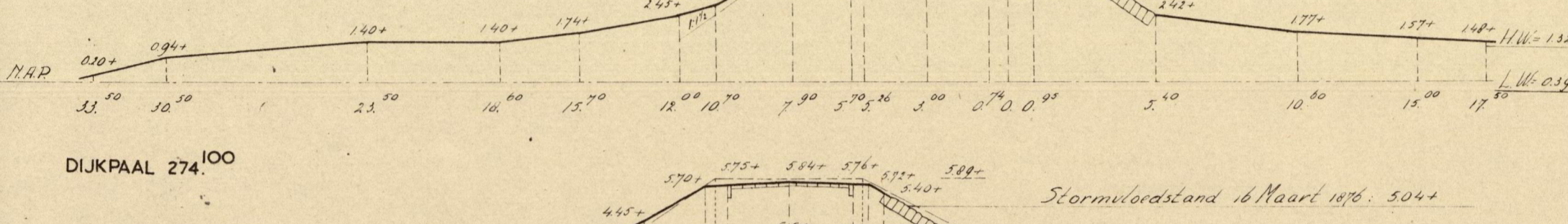
DIJKPAAL 273.195

Polder Langerak



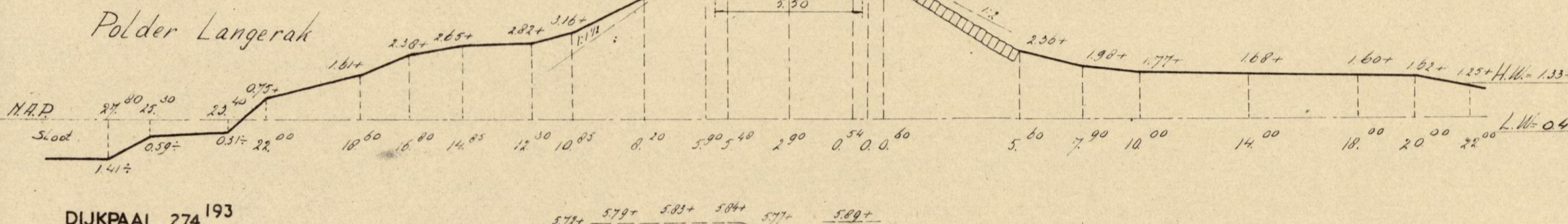
DIJKPAAL 274.100

Polder Langerak



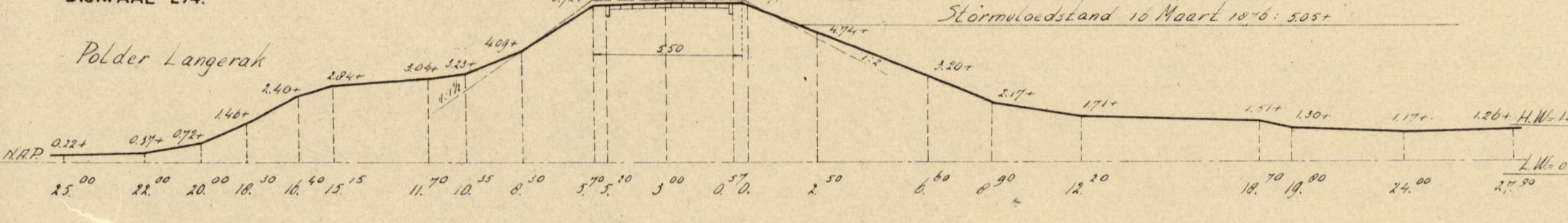
DIJKPAAL 274.193

Polder Langerak



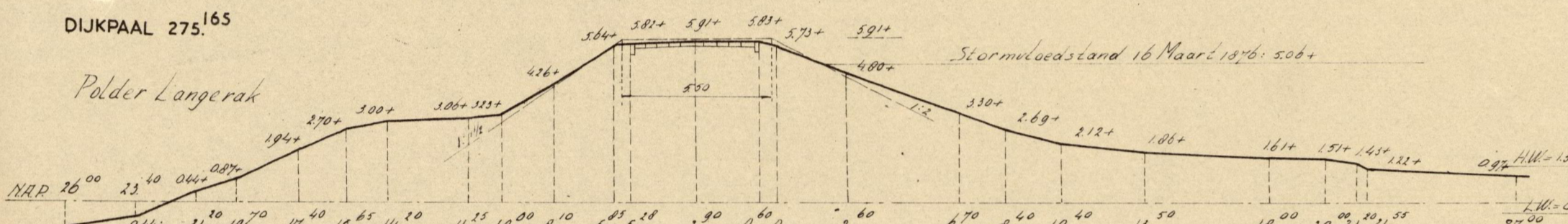
DIJKPAAL 275.165

Polder Langerak



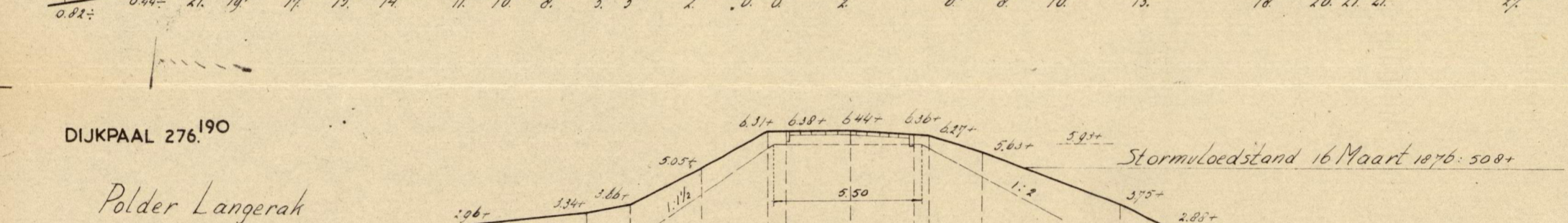
DIJKPAAL 276.190

Polder Langerak



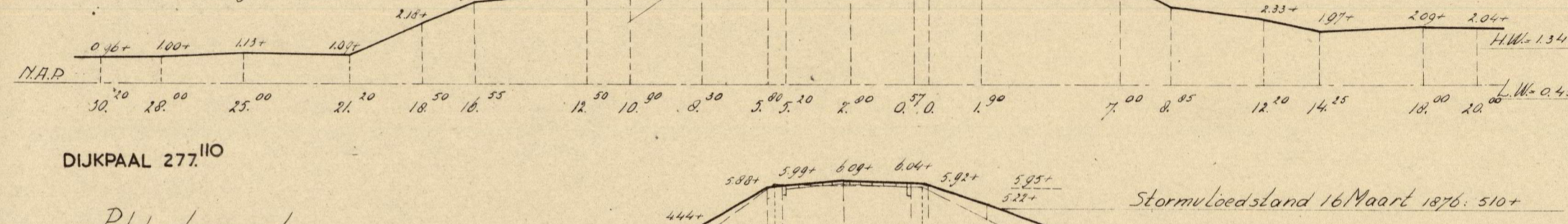
DIJKPAAL 277.110

Polder Langerak



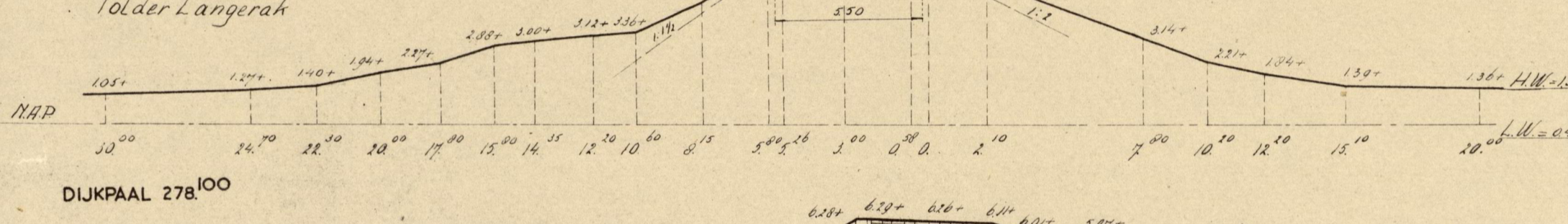
DIJKPAAL 278.100

Polder Middelsebroek, Ameide en Tienhoven



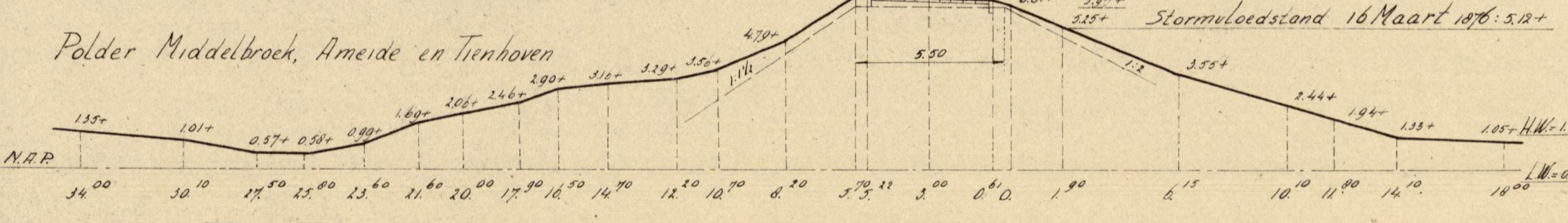
DIJKPAAL 279.100

Polder Middelsebroek, Ameide en Tienhoven



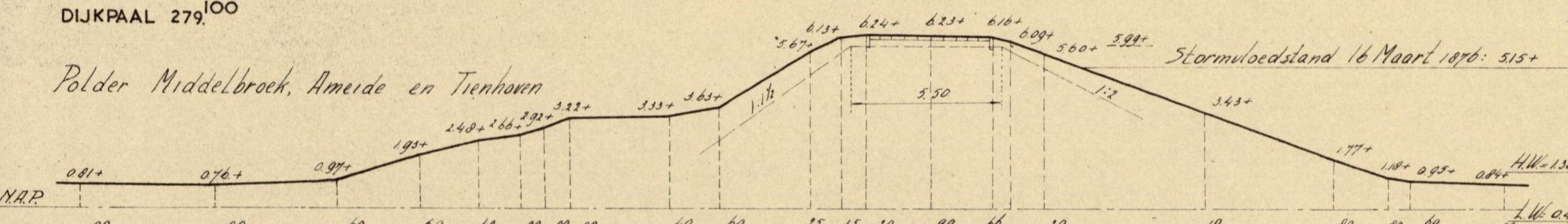
DIJKPAAL 280.196

Polder Middelsebroek, Ameide en Tienhoven



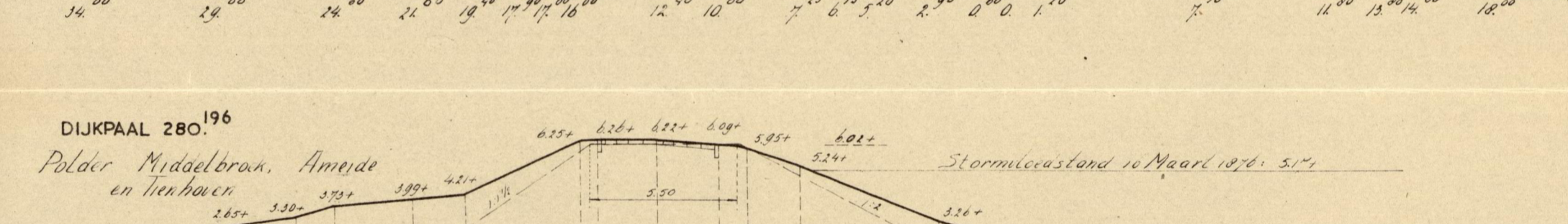
DIJKPAAL 281.190

Polder Middelsebroek, Ameide en Tienhoven



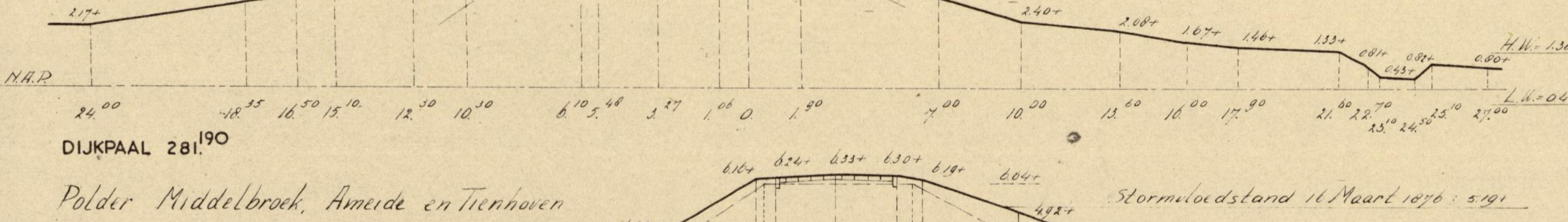
DIJKPAAL 283.000

Polder Middelsebroek, Ameide en Tienhoven



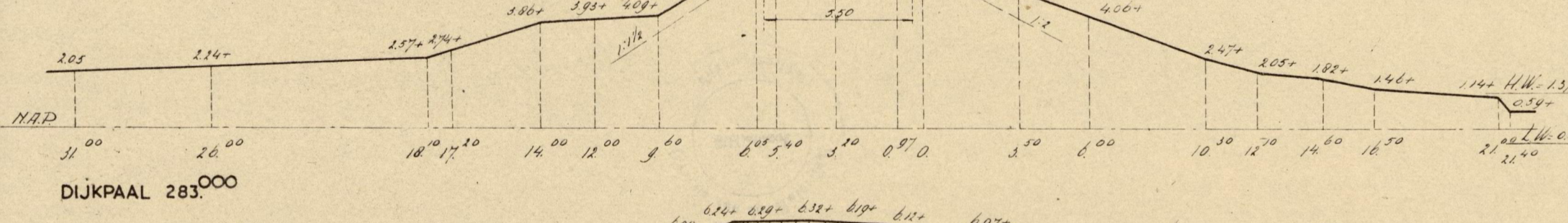
DIJKPAAL 283.185

Polder Middelsebroek, Ameide en Tienhoven



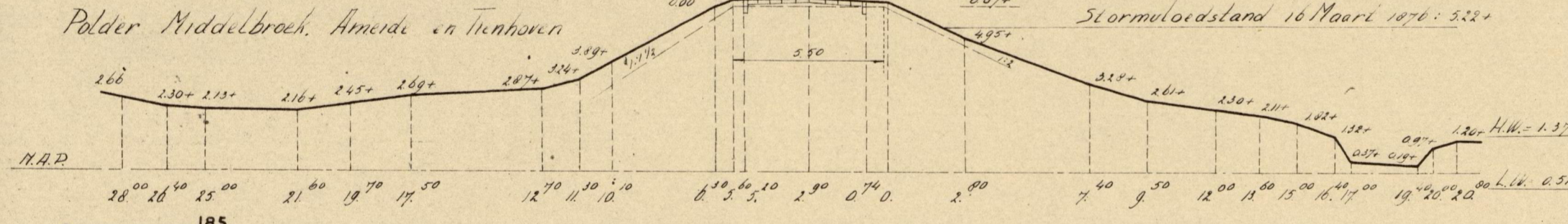
DIJKPAAL 285.000

Polder Middelsebroek, Ameide en Tienhoven



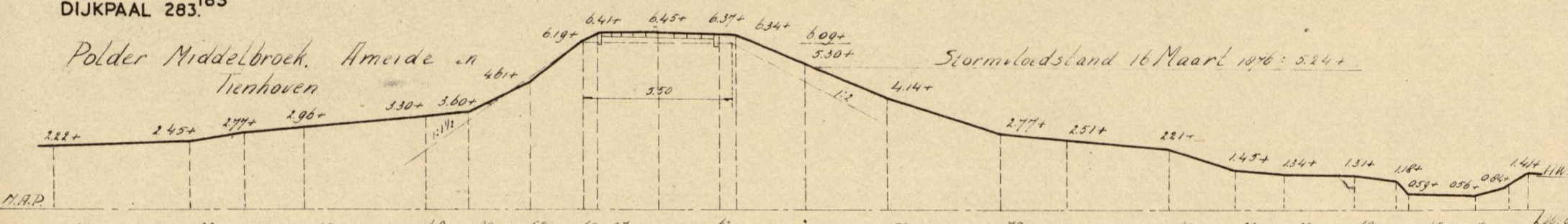
DIJKPAAL 286.000

Polder Middelsebroek, Ameide en Tienhoven



DIJKPAAL 287.000

Polder Middelsebroek, Ameide en Tienhoven



DIJKPAAL 287.195

Polder Middelsebroek, Ameide en Tienhoven

